

2014/2015 CATALOGUE DIADENT GROUP INTERNATIONAL

PASSION FOR INNOVATION

Group International. Serving 109 countries worldwide. Dia-Gun, Dia-Pen, D-Lux, Diapex, Diapaste, Endo-Clear, Dia-Prep Plus, ISO sizes Gutta Percha Points, Patented Millimeter Marked Gutta Percha and Paper Points, Dia-Pro ISO GT, Dia-PRO, Dia-PRO T, Dia-PRO W, Dia-System GTP, Dia-GTP, Dia-FIT, Dia-VET, Feathered Tip Points, Endodontic Organizers, K-Files, H-Files, Reamers, Barbed Broaches, Nickel Titanium Files, Helix Files, Endo Storage Boxes, Goggles, Bur Blocks, Mini Bur Stands, Nickel Titanium Arch Wires, Miracle Suction, Cheek Retractors, Dia-Endo Ring, Dia-GP Gauge, Dialflex, Endo Training Blocks, Plastic Measuring Set, Endo Stop, Endo Meter Square, Glass Endo Organizer, Glass Medicament Bottles, Glass Diapen Dishes, Glass Mixing Slabs, Prophyl Brushes, Prophyl Cups, DiaDent Group International. Serving 109 countries worldwide. Dia-Gun, Dia-Pen, D-Lux, Diapex, Diapaste, Endo-Clear, Dia-Prep Plus, ISO sizes Gutta Percha and Paper Points, Dia-Pro ISO GT, Dia-PRO, Dia-PRO T, Dia-PRO W, Dia-System GTP, Dia-GTP, Dia-FIT, Tip Points, Endodontic H-Files, Reamers, Barbed Titanium Files, Helix Boxes, Goggles, Bur Stands, Nickel Titanium Suction, Cheek Dia-Endo Ring, Dia-GP Endo Training Blocks, Set, Endo Stop, Endo Glass Endo Organizer, Endo Training Blocks, Set, Endo Stop, Endo Glass Endo Organizer, Endo Training Blocks, Set, Endo Stop, Endo Prophyl Cups, International. Serving 109 countries worldwide. Dia-Gun, Dia-Pen, Diapex, Diapaste, Dia-Prep Plus, Gutta

03 ROOT CANAL TREATMENT
 • Diapex • Diapaste • Dia-Prep Plus • Endo-Clear •

05 ENDODONTIC INSTRUMENT
 • Irrigation Syringe Tips • Diaflex • Dia-Kondensor •

07 SMALL EQUIPMENT
 • Dia-Gun • Dia-Pen • D-Lux •

10 COLOR CODED GUTTA PERCHA
 • ISO sizes • Special Tapered Points •

15 COLOR CODED PAPER POINTS
 • ISO sizes • Special Tapered Points •

19 ENDODONTIC ORGANIZERS

20 ENDODONTIC FILES
 • SS Files • Gates Glidden Drills • Peeso Reamers • Dia-Probe
 • Dia-Spiral Filler • NiTi Files • Helix Rotary Files

24 ENDODONTIC STORAGE BOXES

28 INFECTION CONTROL

29 BUR BLOCKS & STERILIZATION

30 NICKEL TITANIUM ORTHO ARCH WIRES

31 MISCELLANEOUS ITEMS

34 GLASS ITEMS

35 PROPHY BRUSHES & CUPS

Group countries worldwide, DiaDent International, Serving 109 countries worldwide, Dia-Gun, Dia-Pen, D-Lux, Diapex, Diapaste, Endo-Clear, Dia-Prep Plus, ISO sizes Gutta Percha Points, Patented Millimeter Marked Gutta Percha and Paper Points, Dia-Pro ISO GT, Dia-PRO T, Dia-PRO W, Dia-System GTP, Dia-GTP, Dia-FIT, Dia-VET, Feathered Tip Points, Endodontic Organizers, K-Files, H-Files, Reamers, Barbed Broaches, Nickel Titanium Files, Helix Files, Endo Storage Boxes, Goggles, Bur Blocks, Mini Bur Stands, Nickel Titanium Arch Wires, Miracle Retractors, Dia-Endo Ring, Dia-GP Endo Training Blocks, Plastic Measuring Set, Endo Stop, Endo Meter Square, Glass Endo Organizer, Glass Medication Bottles, Glass Dappen Dishes, Glass Mixing Slabs, Prophylaxis Brushes, Prophylaxis Cups, DiaDent Group International, Serving 109 countries worldwide, Dia-Gun, Dia-Pen, D-Lux, Diapex, Diapaste, Endo-Clear, Dia-Prep Plus, ISO sizes Gutta Percha Points, Patented Millimeter Marked Gutta Percha and Paper Points, Dia-Pro ISO GT, Dia-PRO T, Dia-PRO W, Dia-System GTP, Dia-GTP, Dia-FIT, Dia-VET, Feathered Tip Points, Endodontic Organizers, K-Files, H-Files, Reamers, Barbed Broaches, Nickel Titanium Files, Helix Files, Endo Storage Boxes, Goggles, Bur Blocks, Mini Bur Stands, Nickel Titanium Arch Wires, Miracle Retractors, Dia-Endo Ring, Dia-GP Endo Training Blocks, Plastic Measuring Set, Endo Stop, Endo Meter Square, Glass Endo Organizer, Glass Medication Bottles, Glass Dappen Dishes, Glass Mixing Slabs, Prophylaxis Brushes, Prophylaxis Cups, DiaDent Group International, Serving 109 countries worldwide, Dia-Gun, Dia-Pen, D-Lux, Diapex, Diapaste, Endo-Clear, Dia-Prep Plus, ISO sizes Gutta

Diapex®
 Silicone Oil Based Premixed Calcium Hydroxide with Iodoform Paste



SAVES TIME
 MEDICATED
 RADIOPAQUE
 MADE IN USA

INDICATIONS

- Temporary root canal treatment
- Vital pulpotomies in deciduous teeth
- Apexification and Apogogenesis
- Stimulation of apexification and hard tissue formation
- Traumatic injuries
- Root resorption treatment including primary teeth

BENEFITS

- Quiets "hot abscess"
- Disinfects canal
- Pre-mixed and pre-filled for quick and simple application
- Antibacterial and bacteriostatic

Item #1001-301 Regular Kit
 Contains: 1 prefilled syringe (2.0 g of paste) and 20 disposable tips

Item #1001-302 Syringe
 Contains: 1 prefilled syringe (2.0 g of paste)

Item #1001-304 Intro Kit
 Contains: 1 prefilled syringe (0.5 g of paste) and 4 disposable tips

Item #1001-303 Disposable Pre-Bent Tips
 Contains: 20 disposable tips

NOTE
 Diapex does not set and can be removed during a subsequent visit using sodium hypochlorite.

Diapaste™
 Premixed Calcium Hydroxide Barium Sulfate Paste



EASY REMOVAL
 RADIOPAQUE
 FLEXIBLE TIPS
 PREMIXED SYRINGE

INDICATIONS

- Apexification
- Treatment for infected root canal
- Temporary root filling & pulp capping
- Root canal filling for primary teeth
- Disinfection after pulp extirpation
- Vital pulpotomy

ADVANTAGES

- Premixed and prefilled: save time!
- Stable: does not solidify nor separate
- Radiopaque and antibacterial
- Water soluble: easy to remove
- Flexible tips: easy access to apex
- Biocompatible

Item #1001-401 Regular Kit
 Contains: 1 prefilled syringe (2.0 g of paste) and 20 disposable tips

Item #1001-404 Syringe
 Contains: 1 prefilled syringe (2.0 g of paste)

Item #1001-405 Intro Kit
 Contains: 1 prefilled syringe (0.5 g of paste) and 4 disposable tips

Item #1001-315 Disposable Endo Irrigation Tips (Blue)
 Contains: 20 disposable tips in blister pack

Dia-Prep™ Plus
EDTA Cream

Dia-Prep Plus is an EDTA Cream with Urea Peroxide, used as an irrigation agent for chemo-mechanical preparation of the root canal.

ADVANTAGES

- EDTA removes smear layer, softens dentin, and facilitates the removal of calcific obstruction
- Urea peroxide reacts with sodium hypochlorite to produce oxygen bubbles that flush out debris within the canal
- The lubricant medium facilitates instrument movement within the canal to eliminate instrument binding or breakage
- Unclogged dentin tubules and apical area permit better penetration of root canal medicaments and fillings

INDICATIONS (use in conjunction with sodium hypo-chlorite)

- Debridement in the root canal
- Dissolution of pulp remnants
- Removal of smear layer
- Facile movements of canal instruments
- Microbicidal treatment within the canal
- Clearance of dentin tubules and apical area

Item #2002-1100 Regular Kit
Contains: 2 x 6g Dia-Prep Plus syringes and 20 disposable tips



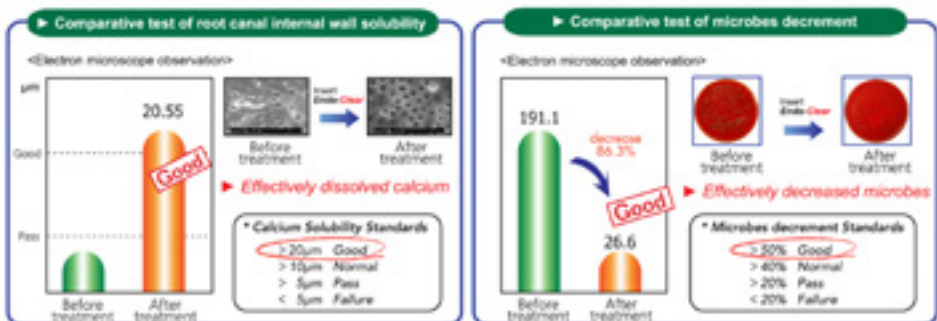
Endo-Clear™
17% Water-Based EDTA Solution

Endo-Clear is an EDTA root canal cleaner that is clear and colorless. It effectively cleans the canal and removes smear layer. Chelating effect of Endo-Clear softens root canal wall, dissolves and removes calcium. Endo-Clear is water-based so it can easily reach narrow apical area and can also be easily removed.

Item #2002-5001 Endo-Clear Set
Contains: 100 ml Endo-Clear Solution, 1 syringe of Diaflex and 3 disposable tips in blister package

Item #2002-5002 Endo-Clear Solution
Contains: 100 ml Endo-Clear Solution

Clinical Studies on Microbes Decrement and Calcium Solubility

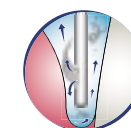


Sterilized Irrigation Tips - Side Open Type

NEW

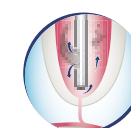


Size	Color	Item #
31G (0.27 x 25mm)	Clear White	951-101
30G (0.30 x 25mm)	Yellow	951-102
28G (0.36 x 25mm)	Blue Green	951-103



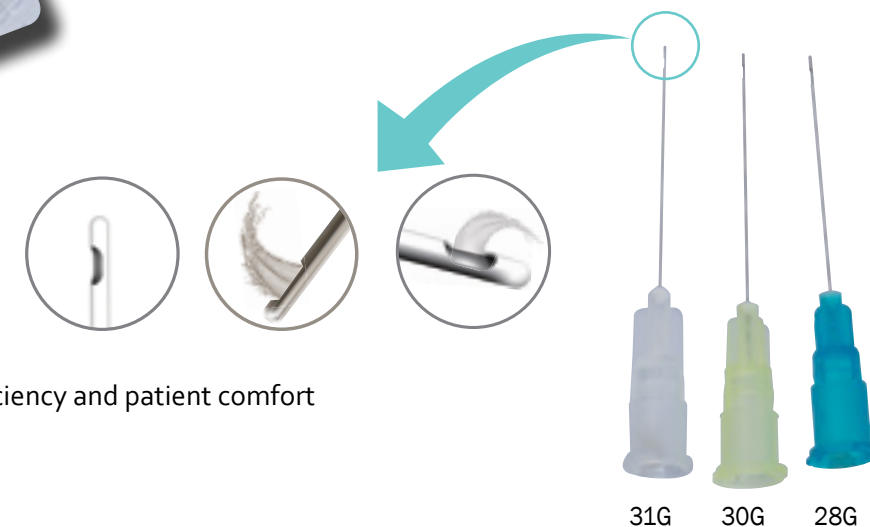
PERIODONTAL POCKETS

- Side-port design effectively irrigates perio pockets and closed, rounded tip can reduce the risk of tissue damage.



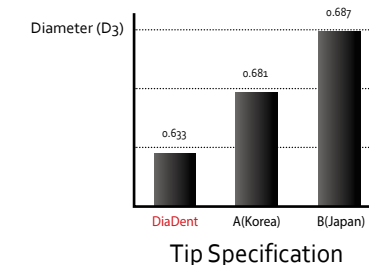
ROOT CANALS

- Side-port dispersal creates an upward flushing motion for a complete root canal preparation. It can also fully clean the gingival sulci without damaging surrounding tissue.



- Pre-sterilized by E.O. Gas (5 year expiration date)
- Unique design of side port/closed end to increase proficiency and patient comfort
- Compatible with Lure Lock syringes
- Round tip end reduces the risk of tissue damage
- 50 tips/box

Disposable Endo Irrigation Tips



ADVANTAGES

- Thinner tips for precision and flexibility
- Hygienic blister package
- Straight tips; can be easily bent according to preference
- Disposable pre-bent tips are also available
- Compatible with Luer Lock Syringes

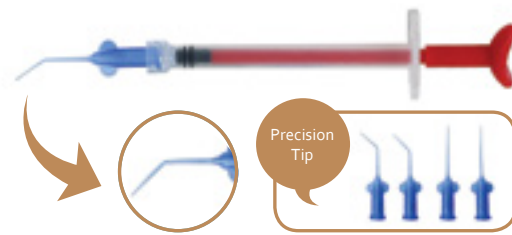
Item #1001-315 Disposable Endo Irrigation Tips (Blue)
Contains: 20 disposable tips in blister pack

Item #1001-316 Disposable Endo Irrigation Tips (White)
Contains: 20 disposable tips in blister pack

Item #1001-303 Disposable Pre-Bent Tips
Contains: 20 disposable tips

Diaflex™
Irrigation Syringe

wet-heat autoclave 132°C



Diaflex is a sterilizable syringe with a soft flexible polypropylene tip for irrigation. It has a soft-tipped narrow probe attached to a 5.5 ml syringe. It can be used to irrigate root canals or periodontal pockets.

ADVANTAGES

- Autoclavable (up to 132°C) and chemically for multiple use up to 50 times
- 5.5 ml volume imprinted in 0.1 ml gradations
- Compatible with Luer Lock Syringes

Item #1003-301 Diaflex 3-pack

Contains: 3 color-coded syringes, 20 disposable tips, and silicone oil

Item #1003-501 Diaflex 5-pack

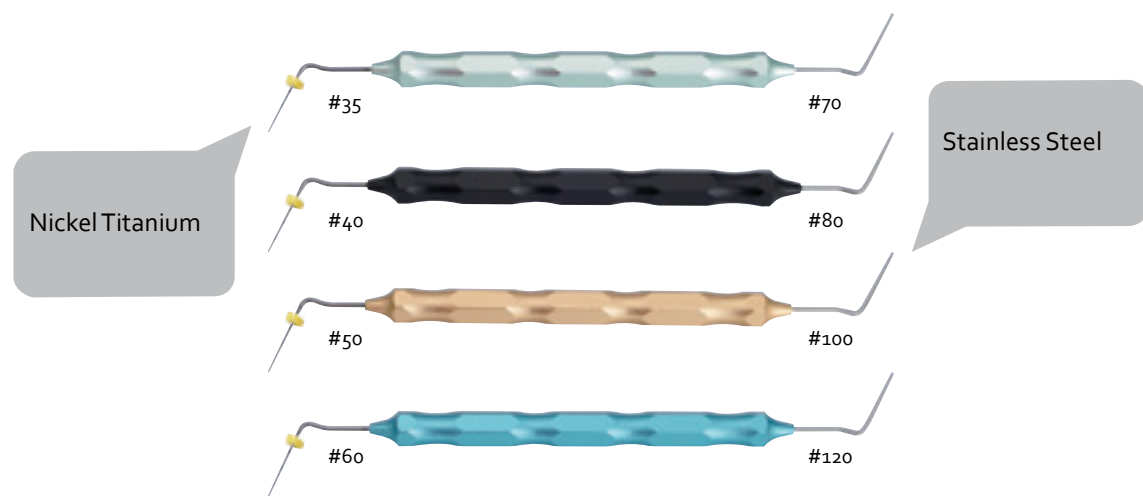
Contains: 5 color-coded syringes, 20 disposable tips, and silicone oil

Item #1001-315 Disposable Endo Irrigation Tips (Blue)

Contains: 20 disposable tips in blister pack

Dia-Kondensor
Endodontic Condensor

NEW



FEATURES

- Double ended: Nickel Titanium and Stainless Steel
- ISO sized: compatible with ISO standard files and obturation material
- Durable and lightweight design to reduce hand fatigue
- Ergonomic design with dimpled finger rest
- Color-coded handpiece for fast and easy identification
- Markings on tip to indicate pulp length
- Gradual .02 taper to enhance tactile feedback to prevent root fracture
- Endo stop included on the NiTi end

Size	Item Number
#35/70 (Green)	551-101
#40/80 (Black)	551-102
#50/100 (Yellow)	551-103
#60/120 (Blue)	551-104
Complete Set (4 pcs)	551-191

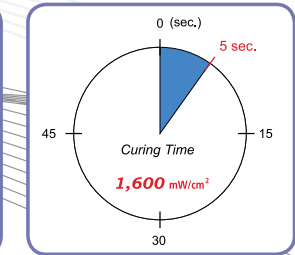
D.LUX™
Cordless LED Curing Light



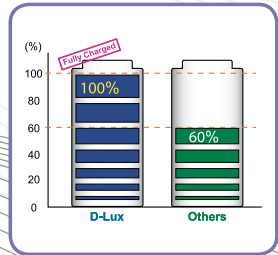
Simple & Intuitive
OLED Button



High Intensity
Output



Fast Charging
System (90min)



COMPLETE KIT

Item #4004-1001

Contains: D-Lux Hand-piece, Charger Base, Light Guide, Battery, Plastic Protector, Power Supply and Cord.

D-Lux Regular Kit

- Item #4004-1110
- Item #4004-1120
- Item #4004-1130
- Item #4004-1131
- Item #4004-1150
- Item #4004-1160
- Item #4004-1170

- D-Lux Hand-piece
- Charger Base
- Light Guide 11 x 11 mm
- Turbo Light Guide 8 x 11 mm
- Battery Pack
- Protective Light Shield
- Power Supply & Cord

D-Lux is a new advanced cordless LED curing light. Made from the highest quality aluminum, D-Lux dissipates heat quickly so that it can produce the maximum light intensity safely and consistently. D-Lux has a premium 2-year manufacturer warranty.

FEATURES:

- OLED panel: unique and advanced one-button control
- Cordless, highly portable, and lightweight (only 155 g)
- Unique ergonomic design: provides comfortable grip and easy-to-read OLED panel
- Durable one-piece aluminum design is robust and easy to disinfect
- A high light intensity of 1,600 mW/cm² offers fast and reliable polymerization
- High-performance lithium-ion battery technology:
 - * A new fully charged battery provides 160 x 10-second cures
 - * OLED panel conveniently indicates battery life and a countdown timer for the next needed charge
 - * Battery can be fully recharged in 90 minutes

• 5 versatile curing modes for every indication:

- 5 Max:** Maximum light intensity output for 5 seconds
- 10 Max:** Maximum light intensity output for 10 seconds
- 20 Mid:** 70% output of maximum light intensity for 20 seconds
- 20 Soft:** An initial 10% output of maximum light intensity that gradually increases to full power in 10 seconds, followed by 10 seconds output at full power
- 20 Pulse:** Pulses every 0.15 seconds for 20 seconds at maximum light intensity



DIA-GUN™

Cordless Backfill Obturation System

DIA-PEN™

Cordless Warm Vertical Compaction Device

Scan to watch a **TRAINING VIDEO!** Scan to watch an **INTRO VIDEO!**



Dia-Gun is a cordless obturation system that extrudes warm gutta percha to backfill root canals. With Dia-Gun's fast and precise delivery of warm obturation material, optimal results are achieved everytime.

Product Features

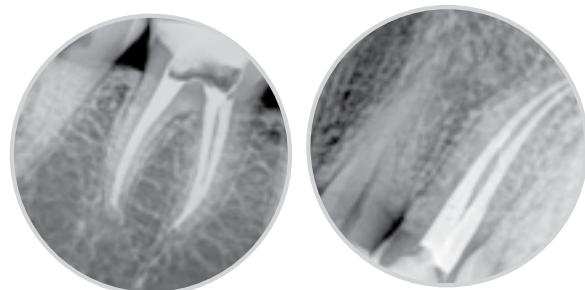
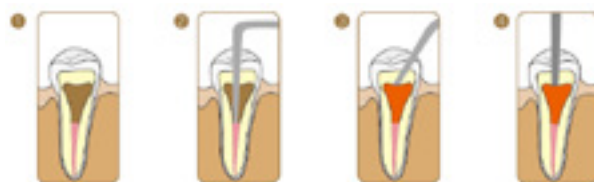
- Cordless, lightweight, and compact design allows complete freedom of movement
- Reliable and precise gutta percha delivery
- Fast and continuous flow of filling material tightly seals the canal
- Variable Temperature Settings (160°C, 180°C, 200°C): precise control of obturation flow
- Quick Heating System: temperature reaches 200°C within 25 seconds
- Ergonomically designed 360° swivel tip offers improved access
- Thinner tip (available in 23G or 25G) can easily fill narrow root canals

Charging Time	Approx. 2 hrs 30 min
Operation Time per full charge	20 times per 4.5 minutes

COMPLETE KIT

Item #4001-1001 Dia-Gun Complete Kit
 Contains: Hand-piece and Charger. Accessories include: 2 Safety Caps, Plunger, 4 Plunger O-Rings, Power Adapter & Cord, 23G - 4 Disposable Gun Tips, Multipurpose wrench, Scrubbing Brush, Battery, and Gutta Percha Obturators (100 pcs).

- Item #4001-1010 Handpiece
 - Item #4001-1020 Charger
 - Item #4001-1030 2 x Safety Caps
 - Item #4001-1040 Plunger
 - Item #4001-1050 4 x Plunger O-Rings
 - Item #4001-1060 Power Adaptor and Cord
 - Item #4001-1070 4 x Disposable Gun Tips (23G)
 - Item #4001-1071 4 x Disposable Gun Tips (25G)
 - Item #4001-1080 Multipurpose Wrench
 - Item #4001-1090 Scrubbing Brush
 - Item #4001-1100 Battery
 - Item #181-101 Gutta Percha Obturator (100 pcs)
- See page 14 for obturator info



Perfect and tightly sealed root canals after using warm obturation technique with Dia-Pen & Dia-Gun.



Dia-Pen is a cordless warm vertical compaction device. Dia-Pen's unparalleled performance and superior design translate into reliable and predictable clinical outcomes.

Supported Techniques

- Softening root canal filling material (Gutta Percha Points)
- Spreading root canal filling material (Gutta Percha Points) laterally and vertically
- Cutting root canal filling material (Gutta Percha Points)
- Compacting root canal filling material (Gutta Percha Points) using heat

Product Features

- Effectively and tightly compacts and seals all canals including lateral canals
- Cordless, ergonomic and lightweight design: easy to handle, clean and store
- Quick heating tip reaches highest level of temperature within one (1) second to save treatment time
- Color-coded pen tips are available in various sizes (#XF, F, FM, M, ML) for easy identification
- Three temperature settings: Low (170°C), Medium (200°C), High (220°C)

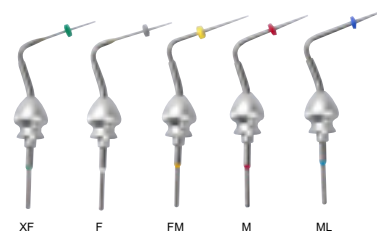
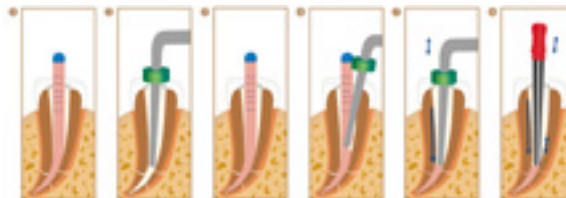
- Simple operation with three buttons:
 - Power and Tip Setting Button
 - Temperature Setting Button
 - Operation Button

Charging Time	Approx. 2 hrs 30 min
Operation Time per full charge	450 times per 2 seconds

COMPLETE KIT

Item #4002-1001 Dia-Pen Complete Kit
 Contains: Dia-Pen Handpiece & Charger. Accessories: 2 x Silicone Covers, Power Adapter & Cord, Pen Tips #F and #FM (1 ea, endo stops included)

- Item #4002-1010 Handpiece
- Item #4002-1020 Charger
- Item #4002-1030 Power Adapter & Cord
- Item #4002-1040 2 x Silicone Covers
- Item #4002-1050 Battery
- Item #4002-1060 Pen Tip #XF
- Item #4002-1061 Pen Tip #F
- Item #4002-1062 Pen Tip #FM
- Item #4002-1063 Pen Tip #M
- Item #4002-1064 Pen Tip #ML
- Item #4002-1065 Pen Tips #F and #FM



Color-coded pen tips are available in various sizes (#XF, F, FM, M, ML)

BUNDLE KIT

Item #4001-4002 Dia-Gun + Dia-Pen Complete Kits

Gutta Percha Points ISO Sizes Non-Marked



Gutta Percha Points ISO Sizes Millimeter Marked



- Laser inspected and hand rolled
- Latex free, radiopaque and hand rolled
- Each size is color coded
- Length = 28 mm +/- 1

Package Information

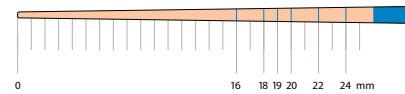
Vial package: contains 6 light weight plastic round vials with color coded caps.

Box dimensions: 79 x 16 x 53 mm (W x H x D)

Spillproof package: 6 compartments plastic package

Box dimensions: 71 x 13 x 46 mm (W x H x D)

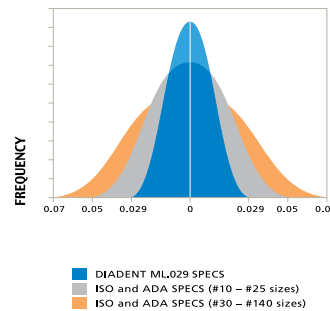
- Millimeter markings provide a quick and easy method for depth measurements
- Eliminates apex perforations
- Save chair time with pre-measured points
- +/- .029 diameter tolerance ensures an excellent fit to the files
- Latex free, radiopaque and hand rolled
- Each size is color coded
- Length = 28 mm +/- 1



Tip Size	Vials	Spill proof	Accessory	Spill proof
	120 / box	120 / box		100 / box
#8	101-401	101-601	XF	102-601
#10	101-402	101-602	FF	102-602
#15	101-403	101-603	MF	102-603
#20	101-404	101-604	F	102-604
#25	101-405	101-605	FM	102-605
#30	101-406	101-606	M	102-606
#35	101-407	101-607	ML	102-607
#40	101-408	101-608	L	102-608
#45	101-409	101-609	XL	102-609
#50	101-410	101-610	XF/M	102-691
#55	101-411	101-611		
#60	101-412	101-612		
#70	101-413	101-613		
#80	101-414	101-614		
#90	101-415	101-615		
#100	101-416	101-616		
#110	101-417	101-617		
#120	101-418	101-618		
#130	101-419	101-619		
#140	101-420	101-620		
#15/40	101-491	101-691		
#45/80	101-492	101-692		
#90/140	101-493	101-693		

#08	Gray only available in #08.			
#10	Purple only available in #10.			
#15	#45	#90	#XF	#ML
#20	#50	#100	#FF	#L
#25	#55	#110	#MF	#XL
#30	#60	#120	#F	
#35	#70	#130	#FM	
#40	#80	#140	#M	

Tip Size	Vials	Spill proof	Accessory	Spill proof
	120 / box	120 / box		100 / box
#8	ML101-401	ML101-601	XF	ML102-601
#10	ML101-402	ML101-602	FF	ML102-602
#15	ML101-403	ML101-603	MF	ML102-603
#20	ML101-404	ML101-604	F	ML102-604
#25	ML101-405	ML101-605	FM	ML102-605
#30	ML101-406	ML101-606	M	ML102-606
#35	ML101-407	ML101-607	ML	ML102-607
#40	ML101-408	ML101-608	L	ML102-608
#45	ML101-409	ML101-609	XL	ML102-609
#50	ML101-410	ML101-610	XF/M	ML102-691
#55	ML101-411	ML101-611		
#60	ML101-412	ML101-612		
#70	ML101-413	ML101-613		
#80	ML101-414	ML101-614		
#90	ML101-415	ML101-615		
#100	ML101-416	ML101-616		
#110	ML101-417	ML101-617		
#120	ML101-418	ML101-618		
#130	ML101-419	ML101-619		
#140	ML101-420	ML101-620		
#15/40	ML101-491	ML101-691		
#45/80	ML101-492	ML101-692		
#90/140	ML101-493	ML101-693		



US Patent: No. 6,004,133
International Patents pending.
European Patents No. 0964656

Dia-Pro ISO GT / Dia-ISO GT

Complements: Helix™ Rotary Files, ProFile® ISO Rotary Files and K3® Files

Dia-ISO GT Non-Marked

- Length = 29 mm +/- 1



Dia-ProISO GT Millimeter Marked

- Length = 29 mm +/- 1



.04 TAPER (60/box)

- 114-602 DIA-ISOGT .04 #10
- 114-603 DIA-ISOGT .04 #15
- 114-604 DIA-ISOGT .04 #20
- 114-605 DIA-ISOGT .04 #25
- 114-606 DIA-ISOGT .04 #30
- 114-607 DIA-ISOGT .04 #35
- 114-608 DIA-ISOGT .04 #40
- 114-609 DIA-ISOGT .04 #45
- 114-610 DIA-ISOGT .04 #50
- 114-611 DIA-ISOGT .04 #55
- 114-612 DIA-ISOGT .04 #60
- 114-613 DIA-ISOGT .04 #70
- 114-614 DIA-ISOGT .04 #80
- 114-615 DIA-ISOGT .04 #90
- 114-616 DIA-ISOGT .04 #100
- 114-617 DIA-ISOGT .04 #110
- 114-618 DIA-ISOGT .04 #120
- 114-619 DIA-ISOGT .04 #130
- 114-620 DIA-ISOGT .04 #140
- 114-691 DIA-ISOGT .04 #15/40
- 114-692 DIA-ISOGT .04 #45/80
- 114-693 DIA-ISOGT .04 #90/140

.06 TAPER (60/box)

- 116-603 DIA-ISOGT .06 #15
- 116-604 DIA-ISOGT .06 #20
- 116-605 DIA-ISOGT .06 #25
- 116-606 DIA-ISOGT .06 #30
- 116-607 DIA-ISOGT .06 #35
- 116-608 DIA-ISOGT .06 #40
- 116-609 DIA-ISOGT .06 #45
- 116-610 DIA-ISOGT .06 #50
- 116-611 DIA-ISOGT .06 #55
- 116-612 DIA-ISOGT .06 #60
- 116-613 DIA-ISOGT .06 #70
- 116-614 DIA-ISOGT .06 #80
- 116-615 DIA-ISOGT .06 #90
- 116-616 DIA-ISOGT .06 #100
- 116-617 DIA-ISOGT .06 #110
- 116-618 DIA-ISOGT .06 #120
- 116-619 DIA-ISOGT .06 #130
- 116-620 DIA-ISOGT .06 #140
- 116-691 DIA-ISOGT .06 #15/40
- 116-692 DIA-ISOGT .06 #45/80
- 116-693 DIA-ISOGT .06 #90/140

.08 TAPER (60/box)

- 117-603 DIA-ISOGT .08 #15
- 117-604 DIA-ISOGT .08 #20
- 117-605 DIA-ISOGT .08 #25
- 117-606 DIA-ISOGT .08 #30
- 117-607 DIA-ISOGT .08 #35
- 117-608 DIA-ISOGT .08 #40
- 117-691 DIA-ISOGT .08 #15/40

.10 TAPER (60/box)

- 118-604 DIA-ISOGT .10 #20
- 118-605 DIA-ISOGT .10 #25
- 118-606 DIA-ISOGT .10 #30
- 118-607 DIA-ISOGT .10 #35
- 118-608 DIA-ISOGT .10 #40
- 118-609 DIA-ISOGT .10 #45
- 118-610 DIA-ISOGT .10 #50
- 118-691 DIA-ISOGT .10 #15/40

.12 TAPER (60/box)

- 119-604 DIA-ISOGT .12 #20
- 119-605 DIA-ISOGT .12 #25
- 119-607 DIA-ISOGT .12 #35
- 119-610 DIA-ISOGT .12 #50
- 119-611 DIA-ISOGT .12 #55
- 119-612 DIA-ISOGT .12 #60
- 119-613 DIA-ISOGT .12 #70
- 119-691 DIA-ISOGT .12 #15/40

.05 TAPER (60/box)

- 115-603 DIA-ISOGT .05 #15
- 115-604 DIA-ISOGT .05 #20
- 115-605 DIA-ISOGT .05 #25
- 115-606 DIA-ISOGT .05 #30
- 115-607 DIA-ISOGT .05 #35
- 115-608 DIA-ISOGT .05 #40
- 115-609 DIA-ISOGT .05 #45
- 115-691 DIA-ISOGT .05 #15/40



- 6% Dia-ProISO .06 Plus
- 4% Dia-ProISO .04 Plus
- 2% ML.029 / MMPP

.04 TAPER (60/box)

- ML114-602 DIA-ProISOGT .04 #10
- ML114-603 DIA-ProISOGT .04 #15
- ML114-604 DIA-ProISOGT .04 #20
- ML114-605 DIA-ProISOGT .04 #25
- ML114-606 DIA-ProISOGT .04 #30
- ML114-607 DIA-ProISOGT .04 #35
- ML114-608 DIA-ProISOGT .04 #40
- ML114-609 DIA-ProISOGT .04 #45
- ML114-610 DIA-ProISOGT .04 #50
- ML114-611 DIA-ProISOGT .04 #55
- ML114-612 DIA-ProISOGT .04 #60
- ML114-613 DIA-ProISOGT .04 #70
- ML114-614 DIA-ProISOGT .04 #80
- ML114-691 DIA-ProISOGT .04 #15/40
- ML114-692 DIA-ProISOGT .04 #45/80

.06 TAPER (60/box)

- ML116-603 DIA-ProISOGT .06 #15
- ML116-604 DIA-ProISOGT .06 #20
- ML116-605 DIA-ProISOGT .06 #25
- ML116-606 DIA-ProISOGT .06 #30
- ML116-607 DIA-ProISOGT .06 #35
- ML116-608 DIA-ProISOGT .06 #40
- ML116-609 DIA-ProISOGT .06 #45
- ML116-610 DIA-ProISOGT .06 #50
- ML116-611 DIA-ProISOGT .06 #55
- ML116-612 DIA-ProISOGT .06 #60
- ML116-613 DIA-ProISOGT .06 #70
- ML116-614 DIA-ProISOGT .06 #80
- ML116-691 DIA-ProISOGT .06 #15/40
- ML116-692 DIA-ProISOGT .06 #45/80

Dia-PROT

Complements: ProTaper® Files



- Millimeter Marked
- Hand rolled
- One hand slide open lid
- Length: 29 mm +/- 1

(60/box)

ML150-S601	DIA-ProT F1
ML150-S602	DIA-ProT F2
ML150-S603	DIA-ProT F3
ML150-S604	DIA-ProT F4
ML150-S605	DIA-ProT F5
ML150-S691	DIA-ProT Assorted (F1/F2/F3)
ML150-S692	DIA-ProT Assorted (F4/F5)
ML150-S693	DIA-ProT Assorted (F1-F5)

Dia-PRO W

Complements: WaveOne® Files



- Millimeter Marked
- Hand rolled
- One hand slide open lid
- Length: 30 mm +/- 1

(60/box)

ML165-601	Dia-Pro W Small
ML165-602	Dia-Pro W Primary
ML165-603	Dia-Pro W Large
ML165-691	Dia-Pro W Assorted

Dia-T

Complements: Twisted Files



- Millimeter Marked
- Hand rolled
- One hand slide open lid
- Length: 29 mm +/- 1

(60/box)

ML163-0605	DIA-T .06 #25
ML163-0606	DIA-T .06 #30
ML163-0607	DIA-T .06 #35
ML163-0408	DIA-T .04 #40
ML163-1691	DIA-T Assorted

Dia-System GTP (#20 / #30 / #40)

Complements: ProSystem GT®, ProFile GT® Files, and GT Series X® Rotary Files



- Size #20 = YELLOW
- Double tapered
- Length = 28 mm

Size #20

(60/box)

142-604	DIA-SYSTEM GTP.04 #20
142-606	DIA-SYSTEM GTP.06 #20
142-608	DIA-SYSTEM GTP.08 #20
142-610	DIA-SYSTEM GTP.10 #20
142-612	DIA-SYSTEM GTP.12 #20
142-691	DIA-SYSTEM GTP Asst. #20



- Size #30 = BLUE
- Double tapered
- Length = 28 mm

Size #30

(60/box)

143-604	DIA-SYSTEM GTP.04 #30
143-606	DIA-SYSTEM GTP.06 #30
143-608	DIA-SYSTEM GTP.08 #30
143-610	DIA-SYSTEM GTP.10 #30
143-691	DIA-SYSTEM GTP Asst. #30



- Size #40 = BLACK
- Double tapered
- Length = 28 mm

Size #40

(60/box)

144-604	DIA-SYSTEM GTP.04 #40
144-606	DIA-SYSTEM GTP.06 #40
144-608	DIA-SYSTEM GTP.08 #40
144-610	DIA-SYSTEM GTP.10 #40
144-691	DIA-SYSTEM GTP Asst. #40

Dia-PRO

Complements: ProFile® Series 29® Files



- Length: 29 mm +/- 1

.04 TAPER (60/box)

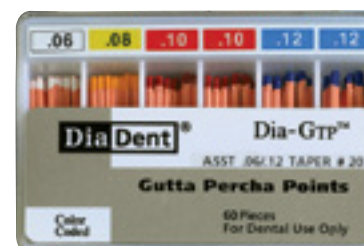
109-602	DIA-PRO .04 #2
109-603	DIA-PRO .04 #3
109-604	DIA-PRO .04 #4
109-605	DIA-PRO .04 #5
109-606	DIA-PRO .04 #6
109-607	DIA-PRO .04 #7
109-608	DIA-PRO .04 #8
109-609	DIA-PRO .04 #9
109-610	DIA-PRO .04 #10
109-691	DIA-PRO .04 #2/7

.06 TAPER (60/box)

110-602	DIA-PRO .06 #2
110-603	DIA-PRO .06 #3
110-604	DIA-PRO .06 #4
110-605	DIA-PRO .06 #5
110-606	DIA-PRO .06 #6
110-607	DIA-PRO .06 #7
110-608	DIA-PRO .06 #8
110-609	DIA-PRO .06 #9
110-610	DIA-PRO .06 #10
110-691	DIA-PRO .06 #2/7

Dia-GTP

Complements: ProFile GT® Greater Taper Files



- Length: 30 mm

(60/box)

112-601	DIA-GTP .06 #20
112-602	DIA-GTP .08 #20
112-603	DIA-GTP .10 #20
112-604	DIA-GTP .12 #20
112-691	DIA-GTP .06/.12 #20

Dia-FIT

Complements: Shaping Files

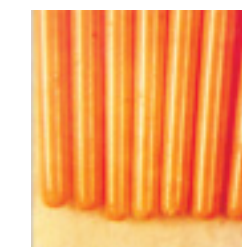


- Length: 30 mm
- Double tapered

(60/box)

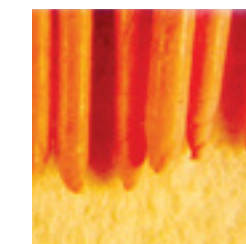
111-601	DIA-FIT .06 #25 (F)
111-602	DIA-FIT .08 #25 (FM)
111-603	DIA-FIT .10 #25 (M)
111-604	DIA-FIT .12 #25 (ML)
111-605	DIA-FIT .04 #25 (FF)

DiaDent Hand Jig Rolled Points



- Consistent, uniform taper
- Smooth, rounded bullet shaped tips
- Readily conforms to shape of canal
- Greater likelihood of optimal apical seal

Machine Rolled Points



- Inconsistent taper
- Uneven, unpredictable shaped tips
- Overlapping of material of the tips
- Reduced likelihood of optimal apical seal

**Dia-VET
Oversized Gutta Percha Points**

Dia-VET 35mm (60/box)

120-603	DIA-35MM #15
120-604	DIA-35MM #20
120-605	DIA-35MM #25
120-606	DIA-35MM #30
120-607	DIA-35MM #35
120-608	DIA-35MM #40
120-609	DIA-35MM #45
120-610	DIA-35MM #50
120-611	DIA-35MM #55
120-612	DIA-35MM #60
120-613	DIA-35MM #70
120-614	DIA-35MM #80
120-615	DIA-35MM #90
120-616	DIA-35MM #100
120-617	DIA-35MM #110
120-618	DIA-35MM #120
120-619	DIA-35MM #130
120-620	DIA-35MM #140
120-691	DIA-35MM #15/25
120-692	DIA-35MM #30/40
120-693	DIA-35MM #45/55
120-694	DIA-35MM #60/80



- Designed for longer canals or animal canals
- Available in .02 taper

Dia-VET 45mm (60/box)

121-106	DIA-45MM #30
121-191	DIA-45MM #15/25
121-192	DIA-45MM #30/40
121-193	DIA-45MM #40/55
121-194	DIA-45MM #60/80
121-201	DIA-45MM #M

Dia-VET 60mm (60/box)

122-202	DIA-60MM #10
122-203	DIA-60MM #15
122-204	DIA-60MM #20
122-205	DIA-60MM #25
122-206	DIA-60MM #30
122-207	DIA-60MM #35
122-208	DIA-60MM #40
122-209	DIA-60MM #45
122-210	DIA-60MM #50
122-211	DIA-60MM #55
122-212	DIA-60MM #60
122-213	DIA-60MM #70
122-214	DIA-60MM #80
122-215	DIA-60MM #90
122-216	DIA-60MM #100
122-217	DIA-60MM #110
122-218	DIA-60MM #120
122-219	DIA-60MM #130
122-220	DIA-60MM #140
122-291	DIA-60MM #15/25
122-292	DIA-60MM #30/40
122-293	DIA-60MM #45/55
122-294	DIA-60MM #60/80

**Paper Points ISO Sizes
Non-Marked**



- Made from specially formulated highly absorbent papers
- Hand rolled to ensure superior absorbency

Package Information

Cell pack: points remain sterile until opened
Box dimensions: 156 x 13 x 55 mm (W x H x D)

Tip Size	Cells	Vials	Spill proof
	200 / box	200 / box	200 / box
#8	201-301	201-401	201-601
#10	201-302	201-402	201-602
#15	201-303	201-403	201-603
#20	201-304	201-404	201-604
#25	201-305	201-405	201-605
#30	201-306	201-406	201-606
#35	201-307	201-407	201-607
#40	201-308	201-408	201-608
#45	201-309	201-409	201-609
#50	201-310	201-410	201-610
#55	201-311	201-411	201-611
#60	201-312	201-412	201-612
#70	201-313	201-413	201-613
#80	201-314	201-414	201-614
#90	201-315	201-415 (120/box)	201-615 (120/box)
#100	201-316	201-416 (120/box)	201-616 (120/box)
#110	201-317	201-417 (120/box)	201-617 (120/box)
#120	201-318	201-418 (120/box)	201-618 (120/box)
#130	201-319	201-419 (120/box)	201-619 (120/box)
#140	201-320	201-420 (120/box)	201-620 (120/box)
#15/40	201-391	201-491 (120/box)	201-691 (120/box)
#45/80	201-392	201-492 (120/box)	201-692 (120/box)
#90/140	201-393	201-493 (120/box)	201-693 (120/box)

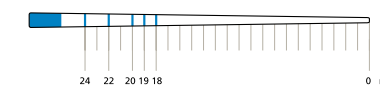
ACCESSORY SIZES (200/box)

Type	Cell Pack	Vials	Spill proof
XXF	202-301	202-401	202-601
XF	202-302	202-402	202-602
F	202-303	202-403	202-603
M	202-304	202-404	202-604
C	202-305	202-405	202-605
XC	202-306	202-406	202-606
XXF/XC	202-391	202-491	202-691

**Paper Points ISO Sizes
Millimeter Marked**



MMPP points are marked to provide preliminary guidance in measuring the root canal depth before proceeding clinically with the application of Gutta Percha Points.



Tip Size	Cells	Vials	Spill proof
	200 / box	200 / box	200 / box
#8	MP201-301	MP201-401	MP201-601
#10	MP201-302	MP201-402	MP201-602
#15	MP201-303	MP201-403	MP201-603
#20	MP201-304	MP201-404	MP201-604
#25	MP201-305	MP201-405	MP201-605
#30	MP201-306	MP201-406	MP201-606
#35	MP201-307	MP201-407	MP201-607
#40	MP201-308	MP201-408	MP201-608
#45	MP201-309	MP201-409	MP201-609
#50	MP201-310	MP201-410	MP201-610
#55	MP201-311	MP201-411	MP201-611
#60	MP201-312	MP201-412	MP201-612
#70	MP201-313	MP201-413	MP201-613
#80	MP201-314	MP201-414	MP201-614
#90	MP201-315	MP201-415 (120/box)	MP201-615 (120/box)
#100	MP201-316	MP201-416 (120/box)	MP201-616 (120/box)
#110	MP201-317	MP201-417 (120/box)	MP201-617 (120/box)
#120	MP201-318	MP201-418 (120/box)	MP201-618 (120/box)
#130	MP201-319	MP201-419 (120/box)	MP201-619 (120/box)
#140	MP201-320	MP201-420 (120/box)	MP201-620 (120/box)
#15/40	MP201-391	MP201-491 (120/box)	MP201-691 (120/box)
#45/80	MP201-392	MP201-492 (120/box)	MP201-692 (120/box)
#90/140	MP201-393	MP201-493 (120/box)	MP201-693 (120/box)

ACCESSORY SIZES (200/box)

Type	Cell Pack	Vials	Spill proof
XXF	MP202-301	MP202-401	MP202-601
XF	MP202-302	MP202-402	MP202-602
F	MP202-303	MP202-403	MP202-603
M	MP202-304	MP202-404	MP202-604
C	MP202-305	MP202-405	MP202-605
XC	MP202-306	MP202-406	MP202-606
XXF/XC	MP202-391	MP202-491	MP202-691

Gutta Percha Obturator



- Designed to be used with Dia-Gun or other obturation guns
- Specially formulated Gutta Percha with excellent flowing characteristics
- Easy to heat: melting point (140°C - 160°C)
- 2.5 mm in diameter
- 100/box

181-101 Gutta Percha Obturator

NEW Temporary Stopping



- Temporization material - provides a complete and hard seal
- Excellent thermal diagnostic tool that helps locating thermal sensitivity
- High quality Gutta Percha
- Easy to heat
- Available in white

180-201 Temporary Stopping 120 g

Feathered Tip Gutta Percha



- Designed to be used as auxiliary points to the master cone technique
- Extra fine taper
- 100/box

126-601	GP Feathertip #XF
126-602	GP Feathertip #FF
126-603	GP Feathertip #MF
126-604	GP Feathertip #F
126-605	GP Feathertip #FM
126-606	GP Feathertip #M
126-607	GP Feathertip #ML
126-608	GP Feathertip #L
126-609	GP Feathertip #XL
126-691	GP Feathertip #XF/M

Dia-Pro ISO GT / Dia-ISO GT

Complements: *Helix™ Rotary Files, ProFile® ISO Rotary Files and K3® Files*

Dia-ISO GT
Non-Marked



.04 TAPER (100/box)

- 210-602 PPDIA-ISOGT .04 #10
- 210-603 PPDIA-ISOGT .04 #15
- 210-604 PPDIA-ISOGT .04 #20
- 210-605 PPDIA-ISOGT .04 #25
- 210-606 PPDIA-ISOGT .04 #30
- 210-607 PPDIA-ISOGT .04 #35
- 210-608 PPDIA-ISOGT .04 #40
- 210-609 PPDIA-ISOGT .04 #45
- 210-610 PPDIA-ISOGT .04 #50
- 210-611 PPDIA-ISOGT .04 #55
- 210-612 PPDIA-ISOGT .04 #60
- 210-613 PPDIA-ISOGT .04 #70
- 210-614 PPDIA-ISOGT .04 #80
- 210-691 PPDIA-ISOGT .04 #15/40
- 210-692 PPDIA-ISOGT .04 #45/80

(60/box)

- 210-615 PPDIA-ISOGT .04 #90
- 210-616 PPDIA-ISOGT .04 #100
- 210-617 PPDIA-ISOGT .04 #110
- 210-618 PPDIA-ISOGT .04 #120
- 210-619 PPDIA-ISOGT .04 #130
- 210-620 PPDIA-ISOGT .04 #140
- 210-693 PPDIA-ISOGT .04 #90/140

.08 TAPER (100/box)

- 213-603 PPDIA-ISOGT .08 #15
- 213-604 PPDIA-ISOGT .08 #20
- 213-605 PPDIA-ISOGT .08 #25
- 213-606 PPDIA-ISOGT .08 #30
- 213-607 PPDIA-ISOGT .08 #35
- 213-608 PPDIA-ISOGT .08 #40
- 213-691 PPDIA-ISOGT .08 #15/40

.06 TAPER (100/box)

- 212-603 PPDIA-ISOGT .06 #15
- 212-604 PPDIA-ISOGT .06 #20
- 212-605 PPDIA-ISOGT .06 #25
- 212-606 PPDIA-ISOGT .06 #30
- 212-607 PPDIA-ISOGT .06 #35
- 212-608 PPDIA-ISOGT .06 #40
- 212-609 PPDIA-ISOGT .06 #45
- 212-610 PPDIA-ISOGT .06 #50
- 212-611 PPDIA-ISOGT .06 #55
- 212-612 PPDIA-ISOGT .06 #60
- 212-613 PPDIA-ISOGT .06 #70
- 212-614 PPDIA-ISOGT .06 #80
- 212-691 PPDIA-ISOGT .06 #15/40
- 212-692 PPDIA-ISOGT .06 #45/80

.10 TAPER (60/box)

- 214-604 PPDIA-ISOGT .10 #20
- 214-605 PPDIA-ISOGT .10 #25
- 214-606 PPDIA-ISOGT .10 #30
- 214-607 PPDIA-ISOGT .10 #35
- 214-691 PPDIA-ISOGT .10 #15/40

.12 TAPER (60/box)

- 215-604 PPDIA-ISOGT .12 #20
- 215-605 PPDIA-ISOGT .12 #25
- 215-606 PPDIA-ISOGT .12 #30
- 215-607 PPDIA-ISOGT .12 #35
- 215-611 PPDIA-ISOGT .12 #55
- 215-691 PPDIA-ISOGT .12 #15/40

Dia-ProISO GT (Spillproof)
Millimeter Marked



Highly absorbent. Uniformly tapered to match tapered instruments. Points are marked to provide preliminary guidance in measuring the root canal depth before proceeding clinically with the application of Gutta Percha Points. **Cell packs are pre-sterilized.**

.04 TAPER (100/box)

- MP210-602 PPDIA-ProISOGT .04 #10
- MP210-603 PPDIA-ProISOGT .04 #15
- MP210-604 PPDIA-ProISOGT .04 #20
- MP210-605 PPDIA-ProISOGT .04 #25
- MP210-606 PPDIA-ProISOGT .04 #30
- MP210-607 PPDIA-ProISOGT .04 #35
- MP210-608 PPDIA-ProISOGT .04 #40
- MP210-609 PPDIA-ProISOGT .04 #45
- MP210-610 PPDIA-ProISOGT .04 #50
- MP210-611 PPDIA-ProISOGT .04 #55
- MP210-612 PPDIA-ProISOGT .04 #60
- MP210-613 PPDIA-ProISOGT .04 #70
- MP210-614 PPDIA-ProISOGT .04 #80
- MP210-691 PPDIA-ProISOGT .04 #15/40
- MP210-692 PPDIA-ProISOGT .04 #45/80

.06 TAPER (100/box)

- MP212-603 PPDIA-ProISOGT .06 #15
- MP212-604 PPDIA-ProISOGT .06 #20
- MP212-605 PPDIA-ProISOGT .06 #25
- MP212-606 PPDIA-ProISOGT .06 #30
- MP212-607 PPDIA-ProISOGT .06 #35
- MP212-608 PPDIA-ProISOGT .06 #40
- MP212-609 PPDIA-ProISOGT .06 #45
- MP212-610 PPDIA-ProISOGT .06 #50
- MP212-611 PPDIA-ProISOGT .06 #55
- MP212-612 PPDIA-ProISOGT .06 #60
- MP212-613 PPDIA-ProISOGT .06 #70
- MP212-614 PPDIA-ProISOGT .06 #80
- MP212-691 PPDIA-ProISOGT .06 #15/40
- MP212-692 PPDIA-ProISOGT .06 #45/80

NEW **Dia-ProISO GT (Cell Pack - Sterilized)**
Millimeter Marked



.04 TAPER (120/box)

- MP258-703 PPDIA-ProISOGT .04 Cell #15
- MP258-704 PPDIA-ProISOGT .04 Cell #20
- MP258-705 PPDIA-ProISOGT .04 Cell #25
- MP258-706 PPDIA-ProISOGT .04 Cell #30
- MP258-707 PPDIA-ProISOGT .04 Cell #35
- MP258-708 PPDIA-ProISOGT .04 Cell #40
- MP258-791 PPDIA-ProISOGT .04 Cell #15/40

.06 TAPER (120/box)

- MP259-703 PPDIA-ProISOGT .06 Cell #15
- MP259-704 PPDIA-ProISOGT .06 Cell #20
- MP259-705 PPDIA-ProISOGT .06 Cell #25
- MP259-706 PPDIA-ProISOGT .06 Cell #30
- MP259-707 PPDIA-ProISOGT .06 Cell #35
- MP259-708 PPDIA-ProISOGT .06 Cell #40
- MP259-791 PPDIA-ProISOGT .06 Cell #15/40

Dia-PRO T

Complements: *ProTaper® Files*



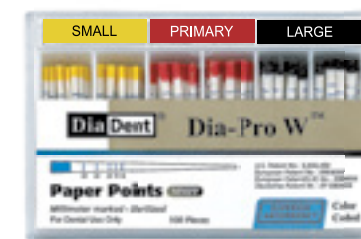
- Millimeter Marked
- One hand slide open lid
- Length: 30 mm +/- 1

(100/box)

- | | |
|------------|------------------------------|
| MP250-S601 | DIA-ProT F1 |
| MP250-S602 | DIA-ProT F2 |
| MP250-S603 | DIA-ProT F3 |
| MP250-S604 | DIA-ProT F4 |
| MP250-S605 | DIA-ProT F5 |
| MP250-S691 | DIA-ProT Assorted (F1/F2/F3) |
| MP250-S692 | DIA-ProT Assorted (F4/F5) |
| MP250-S693 | DIA-ProT Assorted (F1-F5) |

Dia-PRO W

Complements: *WaveOne® Files*



- Millimeter Marked
- One hand slide open lid
- Length: 30 mm +/- 1

(100/box)

- | | |
|-----------|--------------------|
| MP265-601 | Dia-Pro W Small |
| MP265-602 | Dia-Pro W Primary |
| MP265-603 | Dia-Pro W Large |
| MP265-691 | Dia-Pro W Assorted |

Dia-T

Complements: *Twisted Files*



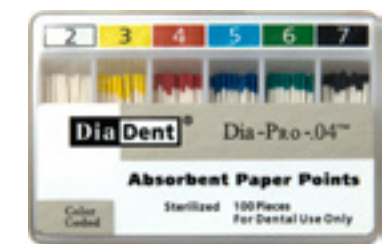
- Millimeter Marked
- One hand slide open lid
- Length: 29 mm +/- 1

(100/box)

- | | |
|------------|----------------|
| MP263-0605 | DIA-T .06 #25 |
| MP263-0606 | DIA-T .06 #30 |
| MP263-0607 | DIA-T .06 #35 |
| MP263-0408 | DIA-T .04 #40 |
| MP263-1691 | DIA-T Assorted |

Dia-PRO

Complements: *ProFile® Series 29® Files*



- Length: 29 mm +/- 1

.04 TAPER (100/box)

- 205-602 PPDIA-PRO .04 #2
- 205-603 PPDIA-PRO .04 #3
- 205-604 PPDIA-PRO .04 #4
- 205-605 PPDIA-PRO .04 #5
- 205-606 PPDIA-PRO .04 #6
- 205-607 PPDIA-PRO .04 #7
- 205-608 PPDIA-PRO .04 #8
- 205-609 PPDIA-PRO .04 #9
- 205-610 PPDIA-PRO .04 #10
- 205-691 PPDIA-PRO .04 #2/7

.06 TAPER (100/box)

- 206-602 PPDIA-PRO .06 #2
- 206-603 PPDIA-PRO .06 #3
- 206-604 PPDIA-PRO .06 #4
- 206-605 PPDIA-PRO .06 #5
- 206-606 PPDIA-PRO .06 #6
- 206-607 PPDIA-PRO .06 #7
- 206-608 PPDIA-PRO .06 #8
- 206-609 PPDIA-PRO .06 #9
- 206-610 PPDIA-PRO .06 #10
- 206-691 PPDIA-PRO .06 #2/7

Dia-System GTP (#20 / #30 / #40)

Complements: ProSystem GT®, ProFile GT® Files, and GT Series X® Rotary Files



- Size #20 = YELLOW
- Double tapered
- Length = 28 mm

Size #20 (100/box)

242-604	DIA-SYSTEM GTP .04 #20
242-606	DIA-SYSTEM GTP .06 #20
242-608	DIA-SYSTEM GTP .08 #20
(60/box)	
242-610	DIA-SYSTEM GTP .10 #20
242-612	DIA-SYSTEM GTP .12 #20
242-691	DIA-SYSTEM GTP Asst.#20



- Size #30 = BLUE
- Double tapered
- Length = 28 mm

Size #30 (100/box)

243-604	DIA-SYSTEM GTP .04 #30
243-606	DIA-SYSTEM GTP .06 #30
243-608	DIA-SYSTEM GTP .08 #30
(60/box)	
243-610	DIA-SYSTEM GTP .10 #30
243-691	DIA-SYSTEM GTP Asst. #30



- Size #40 = BLACK
- Double tapered
- Length = 28 mm

Size #40 (100/box)

244-604	DIA-SYSTEM GTP .04 #40
244-606	DIA-SYSTEM GTP .06 #40
244-608	DIA-SYSTEM GTP .08 #40
(60/box)	
244-610	DIA-SYSTEM GTP .10 #40
244-691	DIA-SYSTEM GTP Asst. #40

Dia-GTP

Complements: ProFile GT® Greater Taper Files



- Length = 30 mm

(100/box)

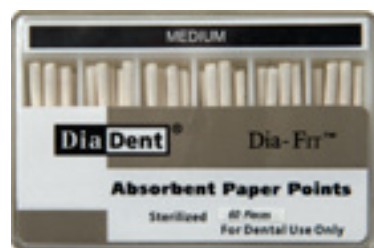
208-601	PPDIA-GTP .06 #20
208-602	PPDIA-GTP .08 #20

(60/box)

208-603	PPDIA-GTP .10 #20
208-604	PPDIA-GTP .12 #20
208-691	PPDIA-GTP .06/12 #20

Dia-FIT

Complements: Shaping Files



- Length = 30 mm
- Double tapered

(100/box)

207-601	PPDIA-FIT .06 #25 (F)
207-602	PPDIA-FIT .08 #25 (FM)
207-605	PPDIA-FIT .04 #25 (FF)

(60/box)

207-603	PPDIA-FIT .10 #25 (M)
207-604	PPDIA-FIT .12 #25 (ML)

Feathered Tip Paper Points (Auxiliary Points)



- Designed to be used as auxiliary points to the master cone technique
- Extra fine taper
- 28 mm +/- 1

(200/box)

204-601	PP FeatherTip #XF
204-602	PP FeatherTip #XF
204-603	PP FeatherTip #F
204-604	PP FeatherTip #M
204-605	PP FeatherTip #C
204-606	PP FeatherTip #XC
204-691	PP FeatherTip #XF/XC

Dia-VET Oversized Paper Points



- Designed for longer canals or animal canals
- Available in .02 taper

Dia-VET 35mm (60/box)

216-603	PP DIA-35MM #15
216-604	PP DIA-35MM #20
216-605	PP DIA-35MM #25
216-606	PP DIA-35MM #30
216-607	PP DIA-35MM #35
216-608	PP DIA-35MM #40
216-609	PP DIA-35MM #45
216-610	PP DIA-35MM #50
216-611	PP DIA-35MM #55
216-612	PP DIA-35MM #60
216-613	PP DIA-35MM #70
216-614	PP DIA-35MM #80
216-691	PP DIA-35MM #15/25
216-692	PP DIA-35MM #30/40
216-693	PP DIA-35MM #45/55
216-694	PP DIA-35MM #60/80

Dia-VET 45mm (60/box)

217-201	PP DIA-45MM #M
217-606	PP DIA-45MM #30
217-691	PP DIA-45MM #15/25
217-692	PP DIA-45MM #30/40
217-693	PP DIA-45MM #45/55
217-694	PP DIA-45MM #60/80

Dia-VET 60mm (60/box)

218-215	PP DIA-60MM #90
218-216	PP DIA-60MM #100
218-217	PP DIA-60MM #110
218-218	PP DIA-60MM #120
218-219	PP DIA-60MM #130
218-220	PP DIA-60MM #140
218-291	PP DIA-60MM #15/25
218-292	PP DIA-60MM #30/40
218-293	PP DIA-60MM #45/55
218-294	PP DIA-60MM #60/80

Endodontic Organizers



301-100

Empty Endo Organizer

ML.029 Gutta Percha Endo Organizer	
EMG 301-101	240 mmMarked Gutta Percha Points (#15-40)
EMG 301-102	240 mmMarked Gutta Percha Points (#45-80)
EMG 301-103	240 mmMarked Gutta Percha Points (#15-80)
EMG 301-104	360 mmMarked Gutta Percha Points (#15-40)
EMG 301-105	360 mmMarked Gutta Percha Points (#45-80)
EMG 301-106	360 mmMarked Gutta Percha Points (#15-80)

mmMarked Paper Points Endo Organizer

EMP 301-201	400 mmMarked Paper Points (#15-40)
EMP 301-202	400 mmMarked Paper Points (#45-80)
EMP 301-203	400 mmMarked Paper Points (#15-80)
EMP 301-204	600 mmMarked Paper Points (#15-40)
EMP 301-205	600 mmMarked Paper Points (#45-80)
EMP 301-206	600 mmMarked Paper Points (#15-80)

Combination of ML.029 GP & mmMarked PP

EMC 301-301	Combi 1 - 120 mmMarked GP/200 mmMarked PP (#15-40)
EMC 301-302	Combi 2 - 120 mmMarked GP/200 mmMarked PP (#45-80)
EMC 301-303	Combi 3 - 240 mmMarked GP/400 mmMarked PP (#15-40)
EMC 301-304	Combi 4 - 240 mmMarked GP/400 mmMarked PP (#45-80)

Gutta Percha Endo Organizer

301-101	240 Gutta Percha Points (#15-40)
301-102	240 Gutta Percha Points (#45-80)
301-103	240 Gutta Percha Points (#15-80)
301-104	360 Gutta Percha Points (#15-40)
301-105	360 Gutta Percha Points (#45-80)
301-106	360 Gutta Percha Points (#15-80)

Paper Point Endo Organizer

301-201	400 Paper Points (#15-40)
301-202	400 Paper Points (#45-80)
301-203	400 Paper Points (#15-80)
301-204	600 Paper Points (#15-40)
301-205	600 Paper Points (#45-80)
301-206	600 Paper Points (#15-80)

Combination of Gutta Percha & Paper Points

301-301	Combi 1 - 120 GP/200 PP (#15-40)
301-302	Combi 2 - 120 GP/200 PP (#45-80)
301-303	Combi 3 - 240 GP/400 PP (#15-40)
301-304	Combi 4 - 240 GP/400 PP (#45-80)



K

K-Files

- Designed to clean and shape root canals
- Produced to give operators a smooth tactile sense inside the canal during instrumentation

H

H-Files

- Ground from Stainless Steel wire
- The flute depth increases with the taper, creating a sharper, more flexible instrument

R

Reamers

- Made from stainless steel wire that is ground to a triangular shape and twisted

Tip Size	21 mm	25 mm	31 mm
#8	SS502-101	SS502-201	SS502-301
#10	SS502-102	SS502-202	SS502-302
#15	SS502-103	SS502-203	SS502-303
#20	SS502-104	SS502-204	SS502-304
#25	SS502-105	SS502-205	SS502-305
#30	SS502-106	SS502-206	SS502-306
#35	SS502-107	SS502-207	SS502-307
#40	SS502-108	SS502-208	SS502-308
#45	SS502-109	SS502-209	SS502-309
#50	SS502-110	SS502-210	SS502-310
#55	SS502-111	SS502-211	SS502-311
#60	SS502-112	SS502-212	SS502-312
#70	SS502-113	SS502-213	SS502-313
#80	SS502-114	SS502-214	SS502-314
#15/40	SS502-191	SS502-291	SS502-391
#45/80	SS502-192	SS502-292	SS502-392

Tip Size	21 mm	25 mm	31 mm
#8	SS503-101	SS503-201	SS503-301
#10	SS503-102	SS503-202	SS503-302
#15	SS503-103	SS503-203	SS503-303
#20	SS503-104	SS503-204	SS503-304
#25	SS503-105	SS503-205	SS503-305
#30	SS503-106	SS503-206	SS503-306
#35	SS503-107	SS503-207	SS503-307
#40	SS503-108	SS503-208	SS503-308
#45	SS503-109	SS503-209	SS503-309
#50	SS503-110	SS503-210	SS503-310
#55	SS503-111	SS503-211	SS503-311
#60	SS503-112	SS503-212	SS503-312
#70	SS503-113	SS503-213	SS503-313
#80	SS503-114	SS503-214	SS503-314
#15/40	SS503-191	SS503-291	SS503-391
#45/80	SS503-192	SS503-292	SS503-392

Tip Size	21 mm	25 mm
#8	SS501-101	SS501-201
#10	SS501-102	SS501-202
#15	SS501-103	SS501-203
#20	SS501-104	SS501-204
#25	SS501-105	SS501-205
#30	SS501-106	SS501-206
#35	SS501-107	SS501-207
#40	SS501-108	SS501-208
#45	SS501-109	SS501-209
#50	SS501-110	SS501-210
#55	SS501-111	SS501-211
#60	SS501-112	SS501-212
#70	SS501-113	SS501-213
#80	SS501-114	SS501-214
#15/40	SS501-191	SS501-291
#45/80	SS501-192	SS501-292

Barbed Broaches



- Designed to remove pulp tissue
- Put it straight into the root canal, rotate 180° and pull out
- 6 files/box

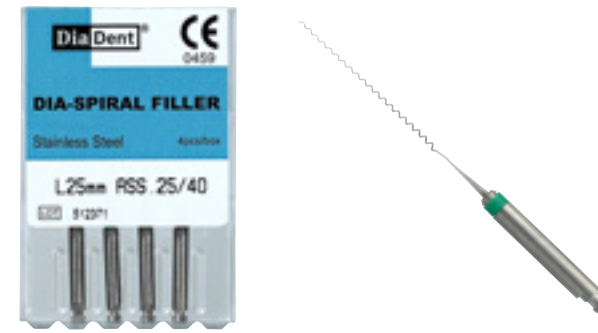
Tip Size	21 mm	25 mm
#20 (XXXXF)	504-001	504-201
#25 (XXXF)	504-002	504-202
#30 (XXF)	504-003	504-203
#35 (XF)	504-004	504-204
#40 (F)	504-005	504-205
#25/40 (XXXF/F)	504-092	504-292

Color vs Size

#08	
#10	
#15	#45
#20	#50
#25	#55
#30	#60
#35	#70
#40	#80

Size / Length	28 mm	32 mm
#1	531-101	531-201
#2	531-102	531-202
#3	531-103	531-203
#4	531-104	531-204
#5	531-105	531-205
#6	531-106	531-206
#1/6 (Assorted)	531-191	531-291

Dia-Spiral Filler



- An engine driven paste filler that has consistently spaced spirals to evenly distribute root canal sealer and cement in the root canal system
- Conical shape made from ground wire and made of high grade stainless steel with gradual spirals
- 4 files/box

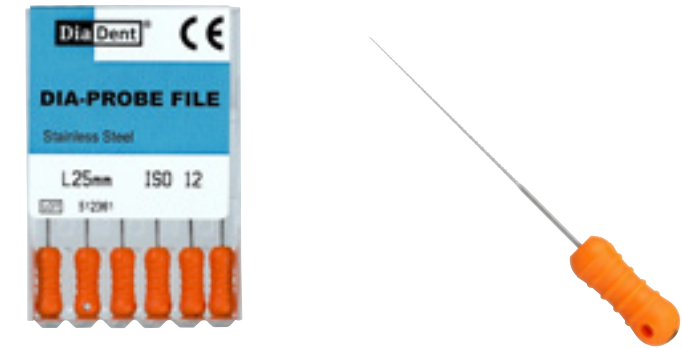
Tip Size	21 mm	25 mm
#25	507-105	507-205
#30	507-106	507-206
#35	507-107	507-207
#40	507-108	507-208
#25/40	507-191	507-291

Gates Glidden Drill



- Used to prepare the upper and middle part of non-curved canal or straight part of curved canal
- Saves time and effectively creates an excellent access point for reamers and files
- Enlarge the straight coronal portion of the canal with Gates Glidden Drill and step down with endo files using the biggest size first as the Crown Down technique
- For opening the orifice of the root canal
- Superior stainless steel with improved cutting capacity
- Sizing circle ring is coded on the shank
- Recommended speed: 800 ~ 1200 r/min
- 6 files/box

Dia-Probe File



- Canal probe
- Minimal taper at 1% helps to perform intermediate steps in calcified or curved canals
- Square section increases safety and resistance to distortion
- Provides consistent tactile feedback throughout procedure
- 6 files/box

Tip Size	21 mm	25 mm
#12	506-101	506-201

NEW

Peso Reamer



- Used to prepare the coronal third and remove debris and fillings inside the canal
- Creates post space
- Excellent stainless steel material with a sharper blade to provide rapid enlargement of canal
- Sizing circle ring is coded on the shank
- Recommended speed: 800 ~ 1200 r/min
- 6 files/box

Size / Length	28 mm	32 mm
#1	541-101	541-201
#2	541-102	541-202
#3	541-103	541-203
#4	541-104	541-204
#5	541-105	541-205
#6	541-106	541-206
#1/6 (Assorted)	541-191	541-291



- NiTi has 5 times the flexibility compared to stainless steel files
- NiTi has 10 times the stress resistance compared to stainless steel files
- Produces smooth and progressive enlargement of root canal
- NiTi follows has memory so there is no need to prebend the files
- Color coded handles and pre-inserted silicone endo stops
- NiTi resists spontaneous breakage, decreases zipping and stripping
- Increased angular rotation reduces fracture
- 6 files/box

HELIX™

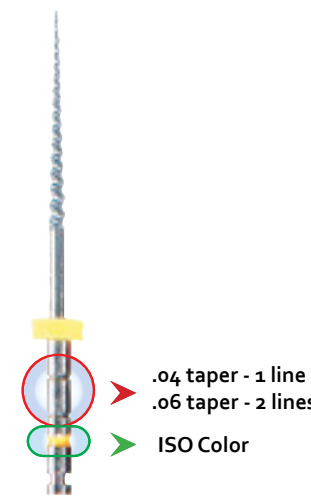
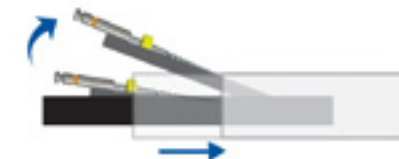
Features and Benefits:

- Made of superior Nickel Titanium Alloy for Engine Driven use
- With amazing flexibility, Helix NiTi Files can easily move through canals, even severely curved ones, safely and efficiently
- Offers a smooth and progressive enlargement of the canal
- Minimum radial land provides safe and fast instrumentation with deep cutting blades
- High resistance to file separation and cyclic fatigue
- Precise fit with Dia-ISO GT/Dia-Pro ISO GT .04 and .06 tapered GP and PP
- Recommended Speed: 150~350 rpm
- Pop-up box design when lid is opened
- 6 files/box



Recommended Direction:

1. Place #10 K-File to as far as it goes in the canal or to approximately Coronal 2/3rd. The file is preferably coated with Dia-Prep Plus (EDTA cream).
2. Prepare Glide path with #15 K-file to the level previously explored by #10 K-File.
3. Shape with Helix Rotary Files #40 .06 taper to Coronal 1/3rd to Coronal 2/3rd.
4. Shape again with Helix Rotary Files #30 .06 taper to Coronal 2/3rd.
5. Explore with #8 K-File, #10 K-File to the Working Length using apex locator and/or x-ray
6. Prepare Glide Path with #15 K-File to the Working Length.
7. Shape with Helix Rotary Files #20 .04 taper to the Working Length.
8. Determine the Apical Shaping size needed.
9. Shape with Helix Rotary Files #20, #25 or #30 with .04 or .06 taper for final Apical Shaping.
10. Frequent irrigation with Sodium Hypochlorite solution and lubrication with Dia-Prep Plus (EDTA cream) throughout the procedure is recommended.
11. Proceed to fit the appropriate size of DiaDent Gutta Percha Points - Dia-Pro ISO GT.



K K-Files

Tip Size	21 mm	25 mm	31 mm
#8	NT502-101	NT502-201	NT502-301
#10	NT502-102	NT502-202	NT502-302
#15	NT502-103	NT502-203	NT502-303
#20	NT502-104	NT502-204	NT502-304
#25	NT502-105	NT502-205	NT502-305
#30	NT502-106	NT502-206	NT502-306
#35	NT502-107	NT502-207	NT502-307
#40	NT502-108	NT502-208	NT502-308
#45	NT502-109	NT502-209	NT502-309
#50	NT502-110	NT502-210	NT502-310
#55	NT502-111	NT502-211	NT502-311
#60	NT502-112	NT502-212	NT502-312
#70	NT502-113	NT502-213	NT502-313
#80	NT502-114	NT502-214	NT502-314
#15/40	NT502-191	NT502-291	NT502-391
#45/80	NT502-192	NT502-292	NT502-392

H H-Files

Tip Size	21 mm	25 mm	31 mm
#8	NT503-101	NT503-201	NT503-301
#10	NT503-102	NT503-202	NT503-302
#15	NT503-103	NT503-203	NT503-303
#20	NT503-104	NT503-204	NT503-304
#25	NT503-105	NT503-205	NT503-305
#30	NT503-106	NT503-206	NT503-306
#35	NT503-107	NT503-207	NT503-307
#40	NT503-108	NT503-208	NT503-308
#45	NT503-109	NT503-209	NT503-309
#50	NT503-110	NT503-210	NT503-310
#55	NT503-111	NT503-211	NT503-311
#60	NT503-112	NT503-212	NT503-312
#70	NT503-113	NT503-213	NT503-313
#80	NT503-114	NT503-214	NT503-314
#15/40	NT503-191	NT503-291	NT503-391
#45/80	NT503-192	NT503-292	NT503-392

R Reamers

Tip Size	21 mm	25 mm	31 mm
#8	NT501-101	NT501-201	NT501-301
#10	NT501-102	NT501-202	NT501-302
#15	NT501-103	NT501-203	NT501-303
#20	NT501-104	NT501-204	NT501-304
#25	NT501-105	NT501-205	NT501-305
#30	NT501-106	NT501-206	NT501-306
#35	NT501-107	NT501-207	NT501-307
#40	NT501-108	NT501-208	NT501-308
#45	NT501-109	NT501-209	NT501-309
#50	NT501-110	NT501-210	NT501-310
#55	NT501-111	NT501-211	NT501-311
#60	NT501-112	NT501-212	NT501-312
#70	NT501-113	NT501-213	NT501-313
#80	NT501-114	NT501-214	NT501-314
#15/40	NT501-191	NT501-291	NT501-391
#45/80	NT501-192	NT501-292	NT501-392

K K-Files (Blister Pack)

Tip Size	21 mm	25 mm	31 mm
#8	NTB502-101	NTB502-201	NTB502-301
#10	NTB502-102	NTB502-202	NTB502-302
#15	NTB502-103	NTB502-203	NTB502-303
#20	NTB502-104	NTB502-204	NTB502-304
#25	NTB502-105	NTB502-205	NTB502-305
#30	NTB502-106	NTB502-206	NTB502-306
#35	NTB502-107	NTB502-207	NTB502-307
#40	NTB502-108	NTB502-208	NTB502-308
#45	NTB502-109	NTB502-209	NTB502-309
#50	NTB502-110	NTB502-210	NTB502-310
#55	NTB502-111	NTB502-211	NTB502-311
#60	NTB502-112	NTB502-212	NTB502-312
#70	NTB502-113	NTB502-213	NTB502-313
#80	NTB502-114	NTB502-214	NTB502-314
#15/40	NTB502-191	NTB502-291	NTB502-391
#45/80	NTB502-192	NTB502-292	NTB502-392

H H-Files (Blister Pack)

Tip Size	21 mm	25 mm	31 mm
#8	NTB503-101	NTB503-201	NTB503-301
#10	NTB503-102	NTB503-202	NTB503-302
#15	NTB503-103	NTB503-203	NTB503-303
#20	NTB503-104	NTB503-204	NTB503-304
#25	NTB503-105	NTB503-205	NTB503-305
#30	NTB503-106	NTB503-206	NTB503-306
#35	NTB503-107	NTB503-207	NTB503-307
#40	NTB503-108	NTB503-208	NTB503-308
#45	NTB503-109	NTB503-209	NTB503-309
#50	NTB503-110	NTB503-210	NTB503-310
#55	NTB503-111	NTB503-211	NTB503-311
#60	NTB503-112	NTB503-212	NTB503-312
#70	NTB503-113	NTB503-213	NTB503-313
#80	NTB503-114	NTB503-214	NTB503-314
#15/40	NTB503-191	NTB503-291	NTB503-391
#45/80	NTB503-192	NTB503-292	NTB503-392

R Reamers (Blister Pack)

Tip Size	21 mm	25 mm	31 mm
#8	NTB501-101	NTB501-201	NTB501-301
#10	NTB501-102	NTB501-202	NTB501-302
#15	NTB501-103	NTB501-203	NTB501-303
#20	NTB501-104	NTB501-204	NTB501-304
#25	NTB501-105	NTB501-205	NTB501-305
#30	NTB501-106	NTB501-206	NTB501-306
#35	NTB501-107	NTB501-207	NTB501-307
#40	NTB501-108	NTB501-208	NTB501-308
#45	NTB501-109	NTB501-209	NTB501-309
#50	NTB501-110	NTB501-210	NTB501-310
#55	NTB501-111	NTB501-211	NTB501-311
#60	NTB501-112	NTB501-212	NTB501-312
#70	NTB501-113	NTB501-213	NTB501-313
#80	NTB501-114	NTB501-214	NTB501-314
#15/40	NTB501-191	NTB501-291	NTB501-391
#45/80	NTB501-192	NTB501-292	NTB501-392

Length	21mm		25mm	
	.04	.06	.04	.06
#20	NT505-104	NT506-104	NT505-204	NT506-204
#25	NT505-105	NT506-105	NT505-205	NT506-205
#30	NT505-106	NT506-106	NT505-206	NT506-206
#35	NT505-107	NT506-107	NT505-207	NT506-207
#40	NT505-108	NT506-108	NT505-208	NT506-208
Assorted	NT505-193	NT506-193	NT505-293	NT506-293

Helix™ Organizer

wet-heat autoclave 132°

- Item #806-103 **RED**
- Item #806-104 **BLUE**

- Ideal for organizing Helix Files
- Holds 10 Helix Files
- Removable inserts
- Dimensions: 50 x 50 x 45 mm (W x H x D)



Small Round (Type A)



Item # 803-003 RED
Item # 803-004 BLUE

- 6 silicone color coded cups
- Ideal for organizing GP & PP
- Removable insert for cleaning
- Dimensions: 40 x 60 mm (D x H)



Small Square (Type A)



Item # 807-003 RED
Item # 807-004 BLUE

- 6 silicone color coded cups
- Ideal for organizing GP & PP
- Removable insert for cleaning
- Dimension: 50 x 50 x 45 mm (W x H x D)



Small Oblong



Item # 805-003 RED
Item # 805-004 BLUE

- 6 compartments
- Dimensions: 130 x 15 x 50 mm (W x H x D)



Large Oblong (Type C)



Item # 812-006

- Separated, individual inserts
- Holds 206 Endo instruments
- 12 color coded silicone cups
- Dimensions: 205 x 53 x 105 mm (W x H x D)



Small Round (Type B)



Item # 802-003 RED
Item # 802-004 BLUE

- Holds 12 hand files
- Removable insert for cleaning
- Dimensions: 40 x 60 mm (D x H)



Small Square (Type B)



Item # 806-003 RED
Item # 806-004 BLUE

- Ideal for organizing Hand Files
- Holds 30 instruments
- Removable insert for cleaning
- Dimension: 50 x 50 x 45 mm (W x H x D)



Large Oblong (Empty)



Item # 820-003 RED
Item # 820-004 BLUE

- Dimensions: 210 x 25 x 50 mm (W x H x D)



Large Oblong (Type D)



Item # 812-007

- Ideal for hand files and rotary files
- Holds 192 hand instruments and 80 rotary instruments
- Dimensions: 205 x 53 x 105 mm (W x H x D)



Medium Round



Item # 821-001

- A larger round box ideal for organizing Hand Files, Gutta Percha, and Paper Points
- Holds 64 instruments, 4 color coded silicone cups
- Dimensions: 92 x 69 mm (D x H)
- Removable insert for cleaning



Medium Oblong (Type A)



Item # 801-003 RED
Item # 801-004 BLUE

- Clean grip for hand & rotary files and cups for Gutta Percha & Paper Points
- Holds 36 instruments & 3 cups
- Dimensions: 130 x 50 x 50 mm (W x H x D)



Large Oblong (Type A)



Item # 812-003 RED
Item # 812-004 BLUE

- Ideal for organizing Hand Files
- Holds 180 endo instruments
- 8 color coded silicone cups
- Removable insert for cleaning
- Dimensions: 218 x 53 x 105 mm (W x H x D)



Large Oblong (Type E)



Item # 812-008

- Holds 308 endo instruments
- 5 color coded silicone cups and 3 wells
- 2 separate inserts
- Dimensions: 205 x 53 x 105 mm (W x H x D)



Medium Square



Item # 804-003 RED
Item # 804-004 BLUE

- Clean grip for hand & rotary files as well as cups for Gutta Percha & Paper Points
- Endo Meter for measuring files & points
- Holds 5 burs, 30 instruments, 6 silicone cups, 1 clean grip, and endo meter
- Dimensions: 120 x 50 x 80 mm (W x H x D)



Medium Oblong (Type B)



Item # 809-003 RED
Item # 809-004 BLUE

- Cups for Gutta Percha & Paper Points
- Holds 60 instruments & 4 cups
- Dimension: 130 x 50 x 50 mm (W x H x D)



Large Oblong (Type B)



Item # 812-005 SILVER

- Ideal for organizing hand files, rotary files, and points
- Holds 357 endo instruments
- 21 color coded silicone cups for points
- Dimensions: 205 x 53 x 105 mm (W x H x D)



Dia-Deluxe



Item # 811-003 RED

- Holds:
 - 4 Spreaders/Pluggers
 - 56 (21 mm) & 48 (25 mm) Instruments
 - 6 Gates Glidden Drills
 - 10 Barbed Broaches
 - 28 Cups and section for cottons
- Dimensions: 215 x 50 x 100 mm (W x H x D)



Large Combi



Item # 818-001

- Allows separation of specific instruments
- Holds 5 individual inserts:
- Insert A: 12 cups
- Insert B: 12 cups + 12 endo instruments
- Insert C: 4 cups + 48 endo instruments
- Insert D: 2 cups + 48 endo instruments
- Insert E: 72 endo instruments
- Dimensions: 205 x 53 x 105 mm (W x H x D)



Small Combi (Type C)



Item # 816-030

- Holds 48 endo instruments
- 4 color coded silicone cups
- Dimensions: 105 x 52 x 44 mm (W x H x D)



Aluminum Box (Empty)



Item # 813-002 GOLDEN (TYPE B)

- Dimensions: 222 x 101 x 38 mm (W x H x D)

Item # 813-003 BLUE (TYPE C)

- Dimensions: 222 x 101 x 51 mm (W x H x D)



Large Empty Box



Item # 823-001

- 5 inserts capacity
- Dimensions: 203 x 101 x 51 mm (W x H x D)



Medium Combi



Item # 817-001

- Holds 3 individual inserts:
- Insert C: 4 cups + 48 endo instruments
- Insert D: 2 cups + 48 endo instruments
- Insert E: 72 endo instruments
- Dimensions: 122 x 50 x 100 mm (W x H x D)



Small Combi (Type D)



Item # 816-040

- Holds 48 endo instruments
- 2 color coded silicone cups
- Dimensions: 105 x 52 x 44 mm (W x H x D)

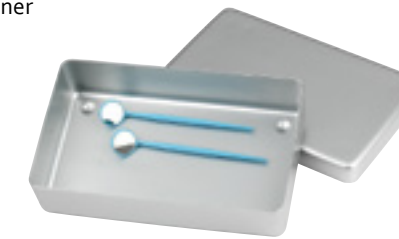


Container (Storage Type A)



Item # 829-001 (Type A)

- Multi-purpose box
- Use as an organizer or for storage
- Bur holders fit well in this container
- Dimensions: 255 x 50 x 216 mm (W x H x D)



Medium Empty Box



Item # 823-002

- 3 inserts capacity
- Dimensions: 127 x 101 x 63 mm (W x H x D)



Small Combi (Type A)



Item # 816-010

- Compact organizer for GP & PP
- Holds 12 color coded autoclavable silicone cups
- Removable inserts for cleaning
- Dimensions: 105 x 52 x 44 mm (W x H x D)



Small Combi (Type E)



Item # 816-050

- Compact organizer for GP & PP
- Holds 72 endo instruments
- Dimensions: 105 x 52 x 44 mm (W x H x D)

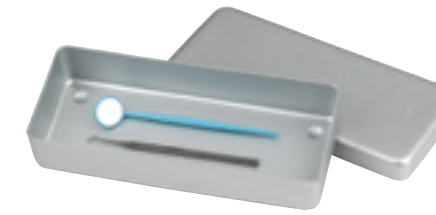


Container (Storage Type B)



Item # 829-002 (Type B)

- Dimensions: 255 x 50 x 108 mm (W x H x D)



Small Empty Box



Item # 823-003

- 1 insert capacity
- Dimensions: 100 x 50 x 45 mm (W x H x D)



Small Combi (Type B)



Item # 816-020

- Compact organizer for files & points
- Holds 24 endo instruments, 12 color coded autoclavable silicone cups for points
- Removable inserts for cleaning
- Dimensions: 105 x 52 x 44 mm (W x H x D)



Small Combi (Type F)



Item # 816-060

- Compact organizer for GP & PP
- 12 color coded silicone cups
- Dimensions: 105 x 52 x 44 mm (W x H x D)



Compartment Box (Type A)



Item # 822-001

- Holds 16 basins
- Dimensions: 230 x 25 x 110 mm (W x H x D)



Compartment Box (Type B)



Item # 822-002

- Holds 12 basins
- Compartments vary in size
- Dimensions: 230 x 25 x 110 mm (W x H x D)



Dia-100FS (Face Shield) & Dia-100SS (Eyes Shield)



Dia-100FS/100SS are developed for face and eyes protection from flying debris and other harmful substances.

- Adjustable to various angles
- Removable nose bridge
- Anti-fog capability
- Can be used with regular glasses
- Regular Set contains: 1 frame and 5 shields. Refill contains: 5 shields.

DIA-100FS (Face Shield)
 Item # 1005-5011 Dia-100FS Regular Set
 Item # 1005-5010 Dia-100FS Refill

DIA-100SS (Eye Shield)
 Item # 1005-5021 Dia-100SS Regular Set
 Item # 1005-5020 Dia-100SS Refill

Dia-200B



FEATURES:

ANTI-FOG ANTI-STATIC



Superior cushioning and ventilation



Good air circulation



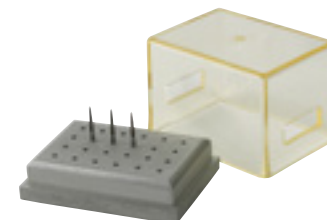
Easily fit over correction glasses

Item # 1005-1031
 Multi-purpose lightweight goggles used among dentists and surgeons for eye protection from flying debris. Prevent eye injuries and contamination from fine dust.

- Spherical lens design for superior optics
- Unique absorption mechanism absorbs moisture effectively and prevents the lenses from steaming up
- Anti-fog coating and anti-static property prevents particles from attaching to the lenses

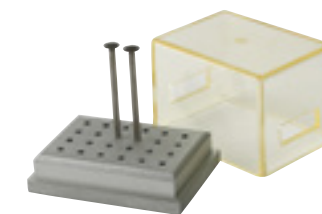
Steri Bur Blocks w/ Cover

132°



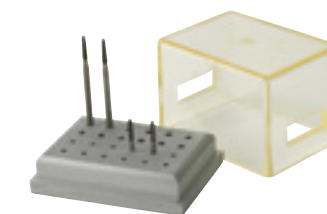
Item #837-001 Type A

- Holds 24 Friction Grip (high speed) Burs
- Dimensions: 60 x 45 x 44 mm (W x H x D)



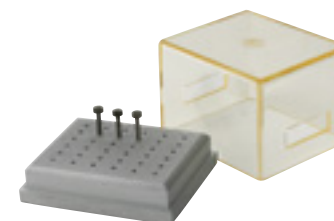
Item #837-002 Type B

- Holds 24 Right Angle (slow speed) Burs
- Dimensions: 60 x 45 x 44 mm (W x H x D)



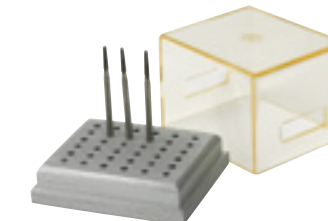
Item #837-003 Type C

- Holds 12 Right Angle (low speed) Burs and 12 Friction Grip (high speed) Burs
- Dimensions: 60 x 45 x 44 mm (W x H x D)



Item #837-004 Type D

- Holds 36 Friction Grip (high speed) Burs
- Dimensions: 60 x 45 x 50 mm (W x H x D)



Item #837-005 Type E

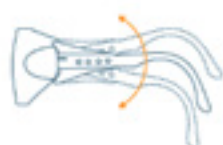
- Holds 36 Right Angle (low speed) Burs
- Dimensions: 60 x 45 x 50 mm (W x H x D)

Dia-300I

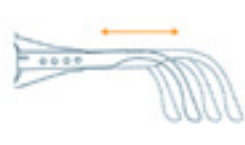


FEATURES:

ANTI-FOG ANTI-STATIC ANTI-UV



Vertical adjustments



Horizontal adjustments



Ultra lightweight

Item # 1005-1041
 Dia-300i is developed to protect your eyes from flying debris during clinical or laboratory procedures.

- Comfort fit at the nose bridge and temple
- Anti-fog technology provides superior moisture control
- Anti-UV substance existent in the lenses deflects UV waves and provides more than 99% protection
- Anti-static - prevents particles from attaching to the lenses

Dia-400D



FEATURES:

ANTI-STATIC ANTI-UV ANTI-SCRATCH



Vertical adjustments



Horizontal adjustments



Ultra lightweight

Item # 1005-1051
 The protective glasses for blue curing light (400-510nm) are used to protect your eyes when curing composite resin.

- Applied wavelength: 400-510nm
- Lenses color: amber
- Excessive exposure to blue lights will damage your vision and eye health

Aluminum Mini Bur Stands

132°



Type A: Holds 12 Friction Grip Burs
 Dimensions: 45 x 32 x 25 mm (W x H x D)

- Silver #838-101
- Red #838-103
- Blue #838-104



Type B: Holds 12 Right Angle Burs
 Dimensions: 45 x 32 x 25 mm (W x H x D)

- Silver #838-201
- Red #838-203
- Blue #838-204



Type C:
 Holds 9 Friction Grip Burs & 3 Right Angle Burs
 Dimensions: 45 x 32 x 25 mm (W x H x D)

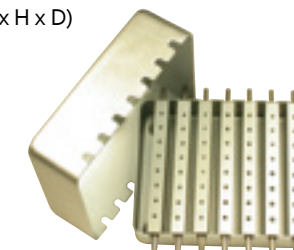
- Silver #838-301
- Red #838-303
- Blue #838-304

Aluminum Bur Box

132°

Item # 831-001

- Holds 32 Friction Grip (high speed) Burs
- 7 interchangeable inserts
- Dimensions: 127 x 101 x 51 mm (W x H x D)



Germicide Bur Box

132°

Item # 915-001

- Contains perforated insert for drainage
- 1 basin bowl, 1 perforated insert & 1 cover
- Durable stainless steel
- Diameter: 75 mm, Height: 35 mm





HEAT ACTIVATED ROUND (10/bag)	
NT312-121	Heat Activated NT Round 0.012 Upper
NT312-122	Heat Activated NT Round 0.012 Lower
NT312-141	Heat Activated NT Round 0.014 Upper
NT312-142	Heat Activated NT Round 0.014 Lower
NT312-161	Heat Activated NT Round 0.016 Upper
NT312-162	Heat Activated NT Round 0.016 Lower
NT312-181	Heat Activated NT Round 0.018 Upper
NT312-182	Heat Activated NT Round 0.018 Lower
NT312-201	Heat Activated NT Round 0.020 Upper
NT312-202	Heat Activated NT Round 0.020 Lower
SUPER ELASTIC ROUND (10/bag)	
NT311-121	Super Elastic NT Round 0.012 Upper
NT311-122	Super Elastic NT Round 0.012 Lower
NT311-141	Super Elastic NT Round 0.014 Upper
NT311-142	Super Elastic NT Round 0.014 Lower
NT311-161	Super Elastic NT Round 0.016 Upper
NT311-162	Super Elastic NT Round 0.016 Lower
NT311-181	Super Elastic NT Round 0.018 Upper
NT311-182	Super Elastic NT Round 0.018 Lower
NT311-201	Super Elastic NT Round 0.020 Upper
NT311-202	Super Elastic NT Round 0.020 Lower
HEAT ACTIVATED RECTANGULAR (10/bag)	
NT322-661	Heat Activated NT Rectangular wire .016 x .016 Upper
NT322-662	Heat Activated NT Rectangular wire .016 x .016 lower
NT322-621	Heat Activated NT Rectangular wire .016 x .022 Upper
NT322-622	Heat Activated NT Rectangular wire .016 x .022 Lower
NT322-721	Heat Activated NT Rectangular wire .017 x .022 Upper
NT322-722	Heat Activated NT Rectangular wire .017 x .022 Lower
NT322-751	Heat Activated NT Rectangular wire .017 x .025 Upper
NT322-752	Heat Activated NT Rectangular wire .017 x .025 Lower
NT322-851	Heat Activated NT Rectangular wire .018 x .025 Upper
NT322-852	Heat Activated NT Rectangular wire .018 x .025 Lower
NT322-951	Heat Activated NT Rectangular wire .019 x .025 Upper
NT322-952	Heat Activated NT Rectangular wire .019 x .025 Lower
SUPER ELASTIC RECTANGULAR (10/bag)	
NT321-661	Super Elastic NT Rectangular wire .016 x .016 Upper
NT321-662	Super Elastic NT Rectangular wire .016 x .016 Lower
NT321-621	Super Elastic NT Rectangular wire .016 x .022 Upper
NT321-622	Super Elastic NT Rectangular wire .016 x .022 Lower
NT321-721	Super Elastic NT Rectangular wire .017 x .022 Upper
NT321-722	Super Elastic NT Rectangular wire .017 x .022 Lower
NT321-751	Super Elastic NT Rectangular wire .017 x .025 Upper
NT321-752	Super Elastic NT Rectangular wire .017 x .025 Lower
NT321-851	Super Elastic NT Rectangular wire .018 x .025 Upper
NT321-852	Super Elastic NT Rectangular wire .018 x .025 Lower
NT321-951	Super Elastic NT Rectangular wire .019 x .025 Upper
NT321-952	Super Elastic NT Rectangular wire .019 x .025 Lower

NiTi Arch Wires

- Last up to 5 times more than Stainless steel
- Larger working range than Stainless steel
- Less distortion and more shape memory than Stainless steel
- Easy to arrange in the bracket slots

NT Heat Activated Arch Wires

- Achieve gentle torque forces at the early stage of treatment
- Easy manipulation
- Wide working range, thus reducing chair time

NT Super Elastic Arch Wires

- High performance for better price
- Natural arch form, satin finish
- Comes in round (for class I, mild cases) and rectangular (for more stiffness and three dimensional control) wires
- Maintain tooth position from earlier treatment



NT Open and Closed Coils

- High resilience and durability
- Gives comfort while open and maintaining proper spaces with constant force

SPRING COILS	
NT331-010	NT Open Spring Coil .010 (3 pieces/bag)
NT331-012	NT Open Spring Coil .012 (3 pieces/bag)
NT332-010	NT Closed Spring .010 (10 pieces/bag)
NT332-012	NT Closed Spring .012 (10 pieces/bag)
REVERSED CURVE ROUND (10/bag)	
NT313-121	Reverse Curve NT Round 0.012 Upper
NT313-122	Reverse Curve NT Round 0.012 Lower
NT313-141	Reverse Curve NT Round 0.014 Upper
NT313-142	Reverse Curve NT Round 0.014 Lower
NT313-161	Reverse Curve NT Round 0.016 Upper
NT313-162	Reverse Curve NT Round 0.016 Lower
NT313-181	Reverse Curve NT Round 0.018 Upper
NT313-182	Reverse Curve NT Round 0.018 Lower
NT313-201	Reverse Curve NT Round 0.020 Upper
NT313-202	Reverse Curve NT Round 0.020 Lower
REVERSED CURVE RECTANGULAR (10/bag)	
NT323-661	Reverse Curve NT Rectangular wire .016 x .016 Upper
NT323-662	Reverse Curve NT Rectangular wire .016 x .016 lower
NT323-621	Reverse Curve NT Rectangular wire .016 x .022 Upper
NT323-622	Reverse Curve NT Rectangular wire .016 x .022 Lower
NT323-721	Reverse Curve NT Rectangular wire .017 x .022 Upper
NT323-722	Reverse Curve NT Rectangular wire .017 x .022 Lower
NT323-751	Reverse Curve NT Rectangular wire .017 x .025 Upper
NT323-752	Reverse Curve NT Rectangular wire .017 x .025 Lower
NT323-851	Reverse Curve NT Rectangular wire .018 x .025 Upper
NT323-852	Reverse Curve NT Rectangular wire .018 x .025 Lower
NT323-951	Reverse Curve NT Rectangular wire .019 x .025 Upper
NT323-952	Reverse Curve NT Rectangular wire .019 x .025 Lower

Miracle Suction



Item # 901-001 Regular Package

Contains: 5 autoclavable mirrors w/ detachable handle, 2 suction holders, 2 hoses, 2 adapters, o-rings and cleaning brush.

Item # 901-002 Mini Package

Contains: 2 autoclavable mirrors w/ detachable handle, 1 suction holder, 1 hose and 1 adapter.

Parts and accessories available upon request.

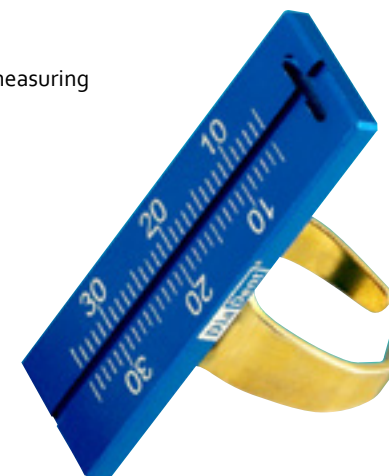
- 5 holes in the mirror head to free up your hand
- Rapid suction while preventing suction on cheek and tongue
- Less obstruction and fewer instruments in the oral cavity
- Cleaning brush for the hose to remove debris
- Color coded handles for easy identification
- 100% stainless steel

Dia-Endoring



Item # 850-001

- Gauges from 1 to 30 mm
- Simple & practical design for measuring hand and rotary files
- Gold-plated
- Dimensions: 45 x 25 x 15 mm (W x H x D)



Dia-GP Gauge



Item # 781-001

- Designed to size the perfect master cone from any Gutta Percha Point
- Drop the GP into the preferred apical size and cut off with a blade
- Dimensions: 92 x 3 x 20 mm (W x H x D)

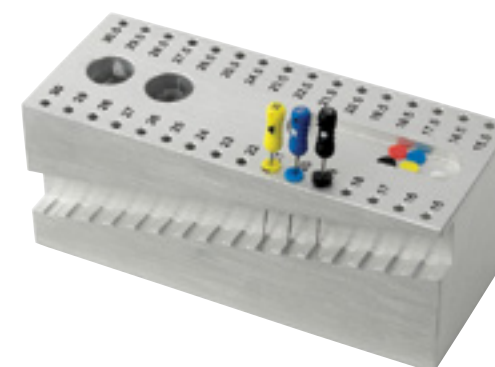


Endo Meter Square



Item # 835-001

- Holds and measures 32 files or other endo instruments
- Gauge from 15 to 30.5 mm, including .5 measurement
- 2 cups for files, 1 cup for endo stops
- Dimensions: 125 x 40 x 40 mm (W x H x D)

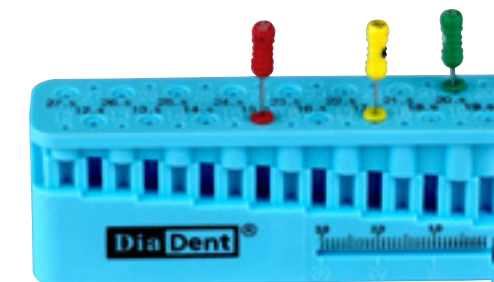


Plastic Measuring Set



Item # 780-001

- Economic alternative to autoclavable counterparts
- Holds 32 measuring grades
- Gauge from 12 to 22 mm
- Dimensions: 87 x 31 x 20 mm (W x H x D)



Endo Grip



Item # 833-001

- Aluminum exterior
- Commonly used for cleaning files
- Holds sponge or gauze
- Diameter: 40 mm, Height: 35 mm



Endo Cleaner

Item # 834-001 Open
Item # 834-002 Closed

- Top unscrews for easy replacement of cotton
- Commonly used for cleaning and sterilizing files
- Diameter: 40 mm, Height: 30 mm



Cotton Roll Dispenser

Item #770-001

- Holds approximately 60 cotton rolls
- Pull out drawer for easy dispensing
- Lid flips back for refills
- Non-slip bottom
- Dimensions: 170 x 101 x 52 mm (W x H x D)



Retractors (Type A)



Item # 740-001 Adult

Item # 740-002 Child

- Soft and flexible plastic
- Package of 2



Endo Instrument Holder



Item # 830-001

- Holds 18 endo instruments
- 45 degree perforations
- Dimensions: 51 x 51 x 25 mm (W x H x D)



Endo Meter

Item # 835-002 Type A Silver
Item # 835-003 Type B Silver/Red

- Holds and measures 10 files
- Gauge from 1 to 35 mm
- Features locking spring mechanism
- Diameter: 35 mm, Height: 48 mm

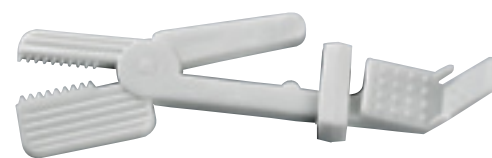


X-Ray Film Holder



Item # 750-001

- Sold individually
- For anterior and posterior x-ray
- Angled for patient comfort



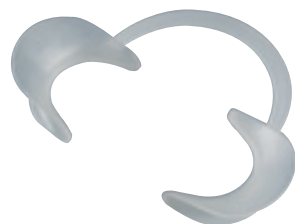
Cheek Retractors (Type B)



Item # 741-001 Adult

Item # 741-002 Child

- Soft and flexible plastic
- Package of 2



wet-heat autoclave



wet-heat autoclave

ID-Ring

Item # 942-101 White
Item # 942-102 Black
Item # 942-103 Brown
Item # 942-104 Green
Item # 942-105 Orange
Item # 942-106 Red
Item # 942-107 Gray
Item # 942-108 Yellow
Item # 942-109 Pink
Item # 942-110 Light Brown
Item # 942-191 Assorted

- Silicone rubber
- Standard size (inner diameter 3.6 mm)
- 120 pieces in box



Waste Container



Item # 815-002

- Diameter: 70 mm, Height: 74 mm
- Separates into 3 pieces for easy cleaning
- Equipped with locking system



Chair Side Table

Item # 712-001

- Available in white
- Fit most chairs
- Easy access to instruments
- Dimensions: 390 x 30 x 235 mm (W x H x D)



Endo Training Blocks

Item # 943-100

- Clear acrylic blocks
- Ideal for new technique training
- Used for .065 tapered NiTi Rotary Files
- 10 blocks/pack



Endo Stop



Item # 701-291

- Directional type
- 120 assorted colored stops packed in a plastic box
- CANNOT be used with Endo Stop Dispenser



Endo Stop Dispenser

Item # 701-000 Empty
Item # 701-001 Filled

- Contains 120 round stops
- Features measuring ruler



Amalgam Well



Item # 819-001

- Diameter: 32 mm, Height: 19 mm



Disposable Brushes

Item #2001-6301
Item #2001-6302
Item #2001-6303Small
Medium
Large

- Flexible adhesive tip allows restoration and small objects to be picked up, held, carried and placed quickly and easily
- 100/pack



Glass Medicament Bottles (Square)

- Item # 605-001 Clear
- Item # 605-002 Amber
- Item # 605-003 Blue
- Item # 605-004 Green

- Locking lids for secure sealing
- Available in 4 colors
- 5 ml volume
- NOT autoclavable



Medicament Bottle Stand

Item # 606-001

- Fits 5 round or square medicament bottles
- Opaque high quality glass
- Dimensions: 215 x 27 x 55 mm (W x H x D)
- NOT autoclavable



Glass Endo Organizer

Item # 602-000

- Shallow compartment walls for liquid sterilization
- 12 shallow wall compartments
- Glass lid with depressions for chemicals
- NOT autoclavable
- Dimensions: 105 x 30 x 105 mm (W x H x D)



Glass Medicament Bottles (Round)

- Item # 604-001 Clear
- Item # 604-002 Amber
- Item # 604-003 Blue
- Item # 604-004 Green

- Locking lids for secure sealing
- Available in 4 colors
- 10 ml volume
- NOT autoclavable



Glass Dappen Dishes

- Item # 601-001 Clear
- Item # 601-002 Amber
- Item # 601-003 Blue
- Item # 601-004 Green

- Sold individually or in box of 12
- NOT autoclavable



Glass Mixing Slabs



- High quality glass
- NOT autoclavable
- Available in 5 different sizes:

Item # 603-005 #10A
150 x 15 x 80 mm (W x H x D)



Item # 603-004 #10
150 x 10 x 75 mm (W x H x D)



Item # 603-003 #4
122 x 5 x 75 mm (W x H x D)



Item # 603-002 #3
112 x 6 x 76 mm (W x H x D)



Item # 603-005 #2
76 x 6 x 65 mm (W x H x D)

Prophy Brush

- Item # 950-101: Latch Type
- Item # 950-102: Screw Type

- 144 brushes/box
- Diameter:
Latch type: 4.48 mm, Screw type: 4.48 mm



Prophy Brush Pointed Head

- Item # 950-111: Latch Type
- Item # 950-112: Screw Type

- 144 brushes/box
- Diameter:
Latch type: 4.48 mm, Screw type: 4.48 mm



Prophy Brush Large Head Latch Type

- Item # 950-121: Large Head Latch Type
- Item # 950-131: Large Pointed Head Latch Type

- 144 brushes/box
- Diameter:
Latch type: 5.98 mm, Screw type: 5.98 mm



Prophy Rubber Cup Ribbed & Webbed

- Item # 950-201: Latch Type
- Item # 950-202: Screw Type

- 144 cups/box



Prophy Rubber Cup Webbed

- Item # 950-211: Latch Type
- Item # 950-212: Screw Type

- 144 cups/box



Prophy Rubber Cup Ribbed

- Item # 950-221: Latch Type
- Item # 950-222: Screw Type

- 144 cups/box



Prophy Rubber Cup Umbrella Shape

- Item # 950-231: Latch Type
- Item # 950-232: Screw Type

- 144 cups/box



Prophy Rubber Cup (misc. type)

- Item # 950-241: Webbed with Washer Latch Type
- Item # 950-251: Ribbed Snap-On
- Item # 950-252: Webbed Snap-On
- Item # 950-253: Ribbed and Webbed Snap-On

- 144 cups/box





www.diadent.com

DIADENT NETWORK

DiaDent Group International Inc. (CANADA & USA)

#11-3871 North Fraser Way, Burnaby, BC Canada V5J 5G6
t: 604.451.8851 | f: 604.451.8865 | tf: 1.877.342.3368
e-mail: diadent@diadent.com

DiaDent Group International (KOREA & INTERNATIONAL)

626, Yeonje-ri, Gangoe-myeon, Cheongwon-gun, Chungcheong-buk-do, Korea. 363-951
t: 82.43.266.2315 | f: 82.43.262.8658
e-mail: diadent@diadent.co.kr

DiaDent Europe B.V (EUROPE)

Antennestraat 70, 1322 AS Almere, The Netherlands
t: 31.36.549.8607 | f: 31.36.536.7317
e-mail: diadent@diadenturope.com